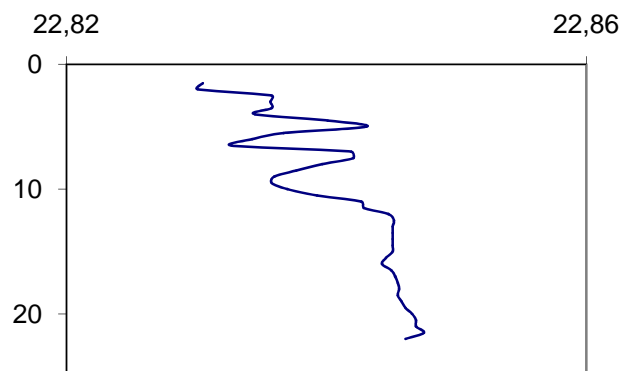
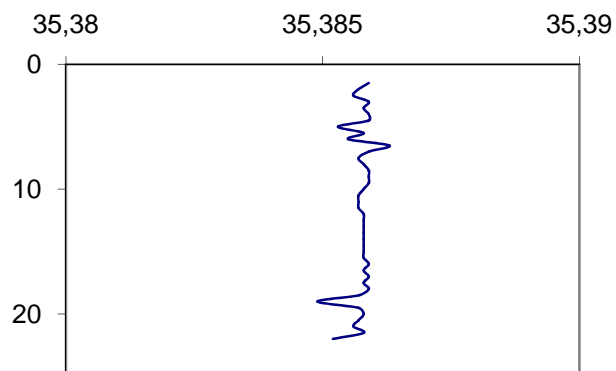


Station : 831 **Latitude : 22.28° S** **Longitude : 166.26° E**
Temps Tu : 13/06/2003 à 15:18:36 **Temps local : 14/06/2003 à 02:18:36**

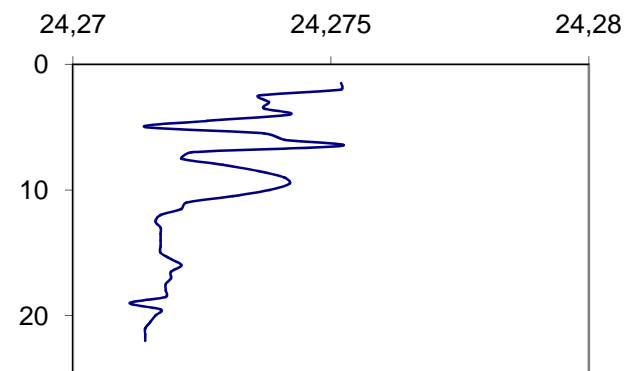
Température (°C)



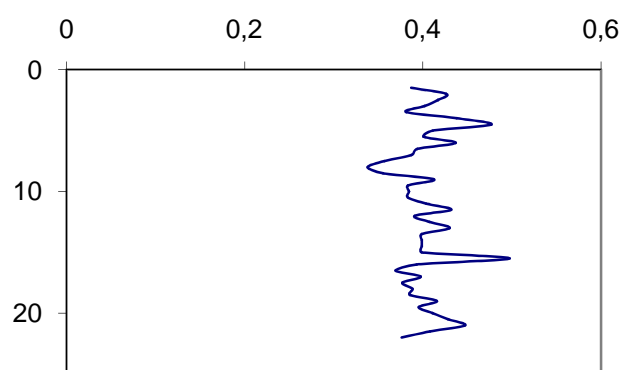
Salinité (ups)



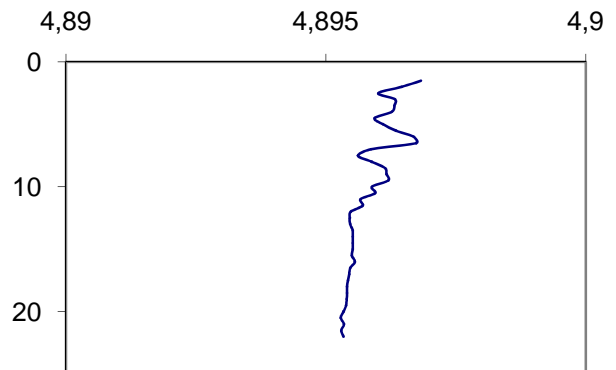
Densité



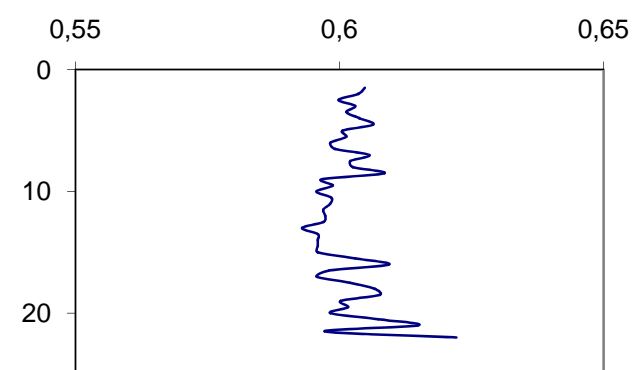
Fluo (mg/m³)



OxSat (mL/L)



c (m⁻¹)



Station : 832

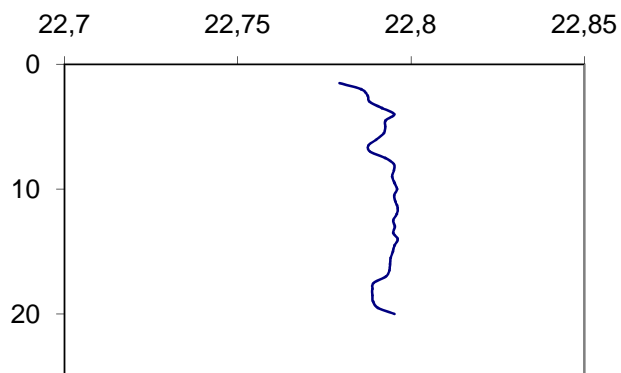
Latitude : 22.28° S

Longitude : 166.25° E

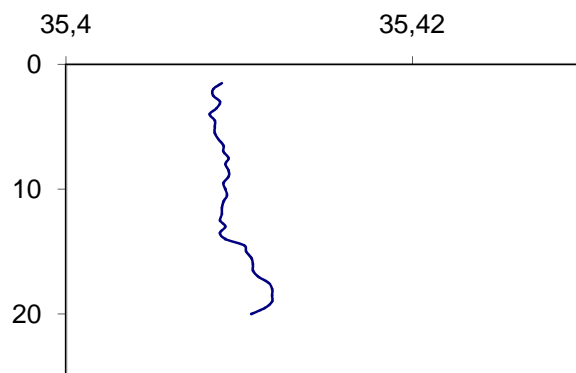
Temps Tu : 13/06/2003 à 18:06:58

Temps local : 14/06/2003 à 05:06:58

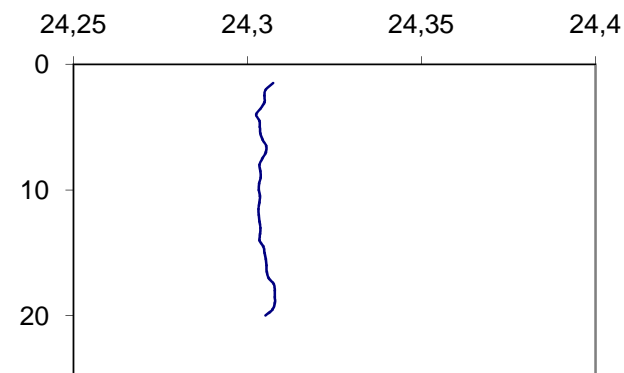
Température (°C)



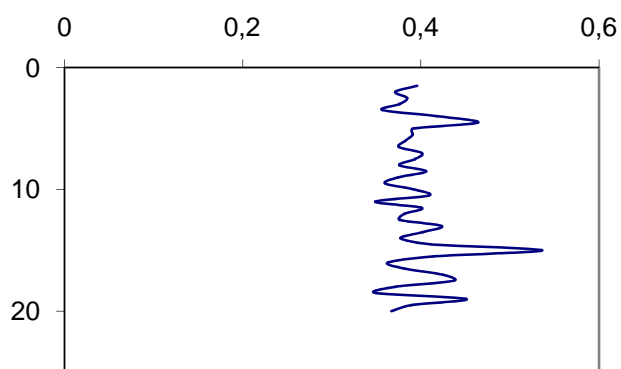
Salinité (ups)



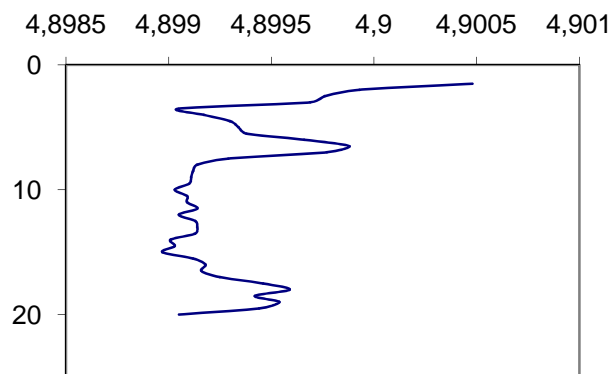
Densité



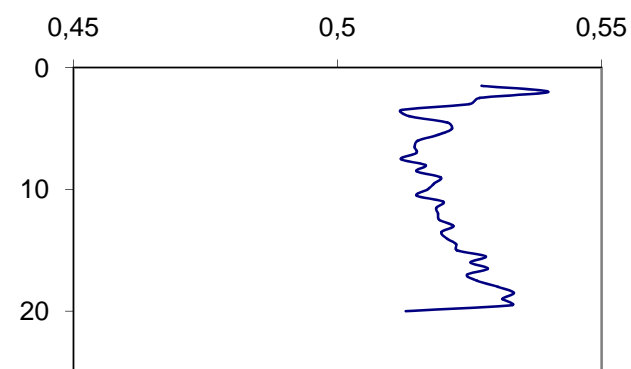
Fluo (mg/m³)



OxSat (mL/L)



c (m⁻¹)



Station : 833

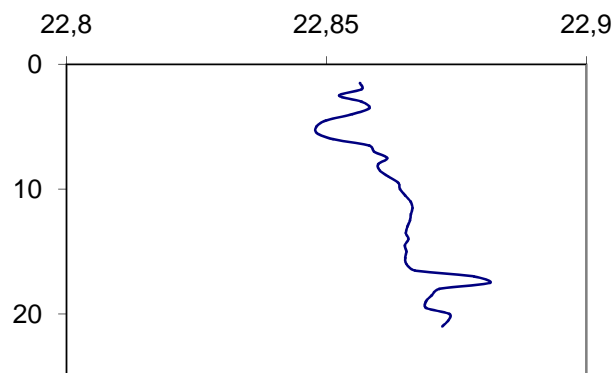
Latitude : 22.31° S

Longitude : 166.26° E

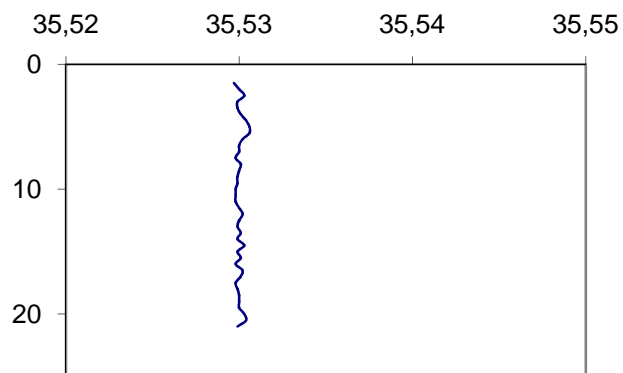
Temps Tu :13/06/2003 à 18:52:01

Temps local :14/06/2003 à 05:52:01

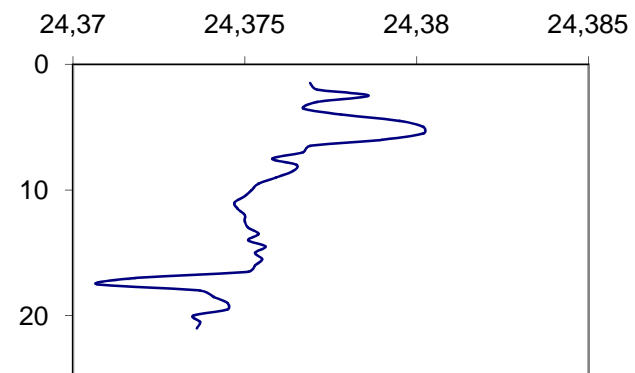
Température (°C)



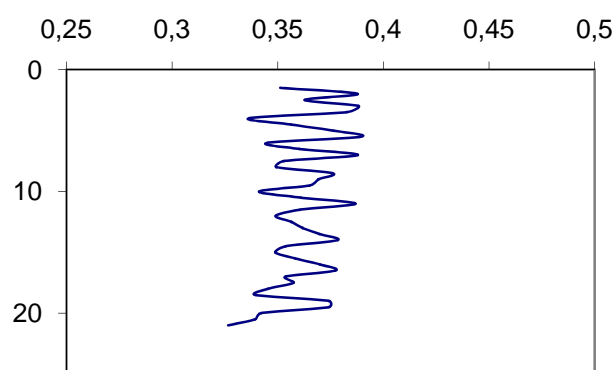
Salinité (ups)



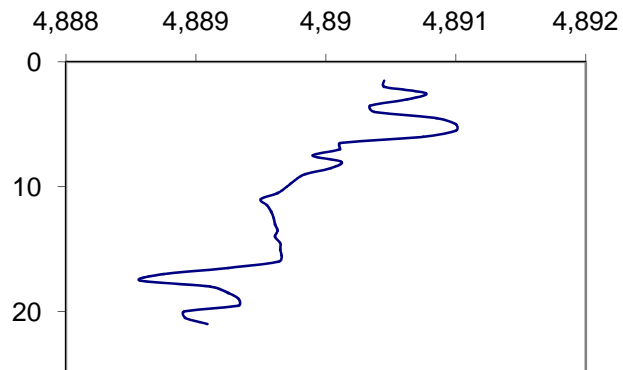
Densité



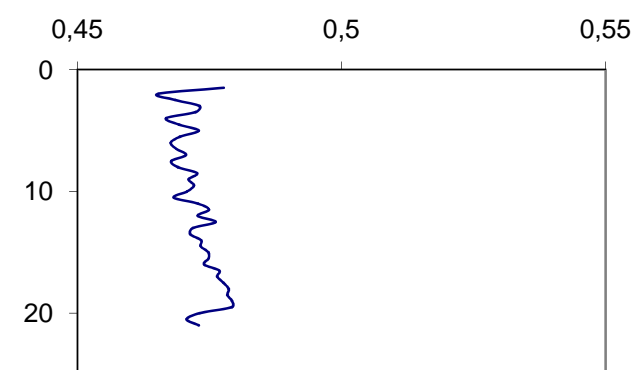
Fluo (mg/m³)



OxSat (mL/L)



c (m⁻¹)



Station : 834

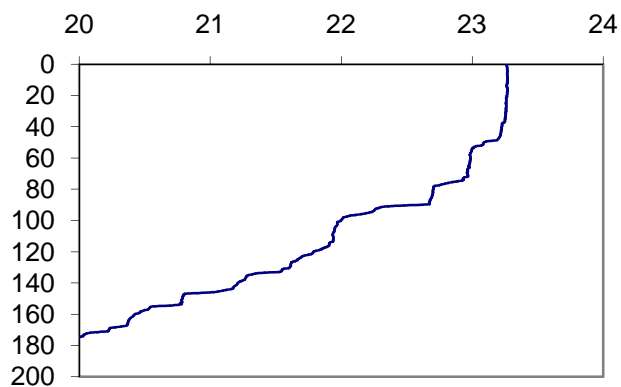
Latitude : 22.35° S

Longitude : 166.26° E

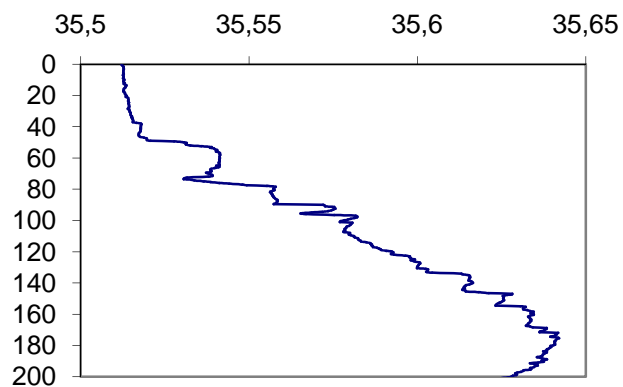
Temps Tu : 13/06/2003 à 19:28:07

Temps local : 14/06/2003 à 06:28:07

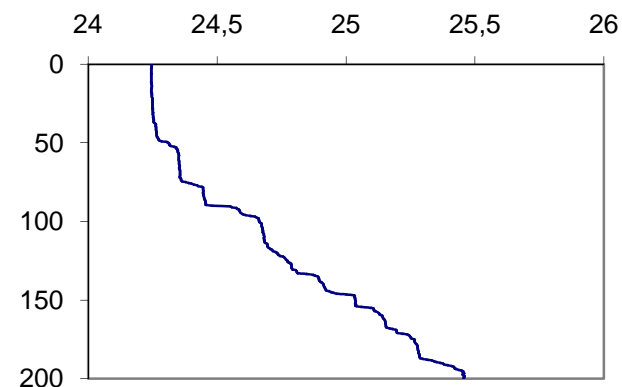
Température (°C)



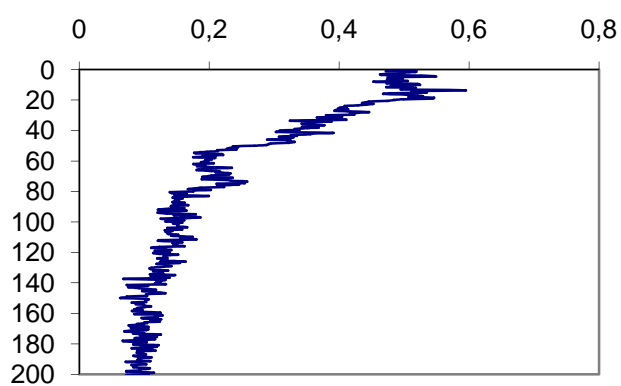
Salinité (ups)



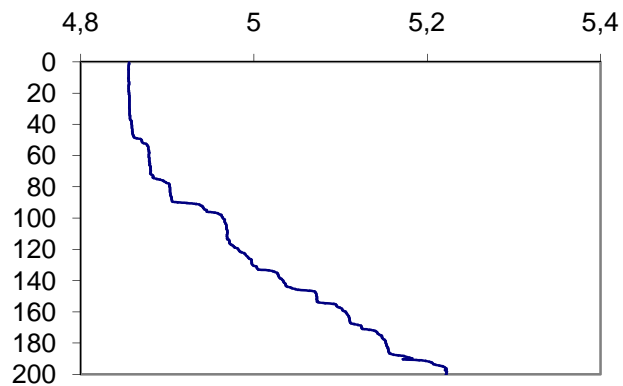
Densité



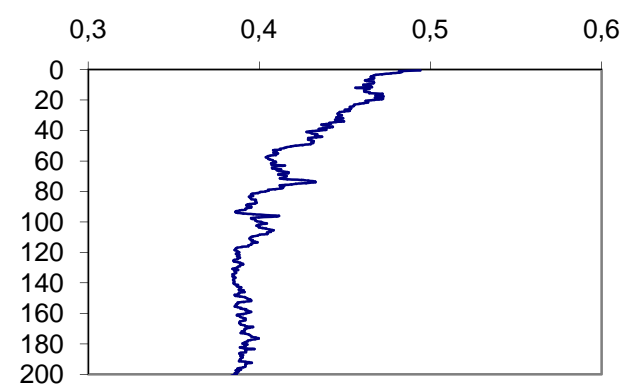
Fluo (mg/m³)



OxSat (mL/L)



c (m⁻¹)



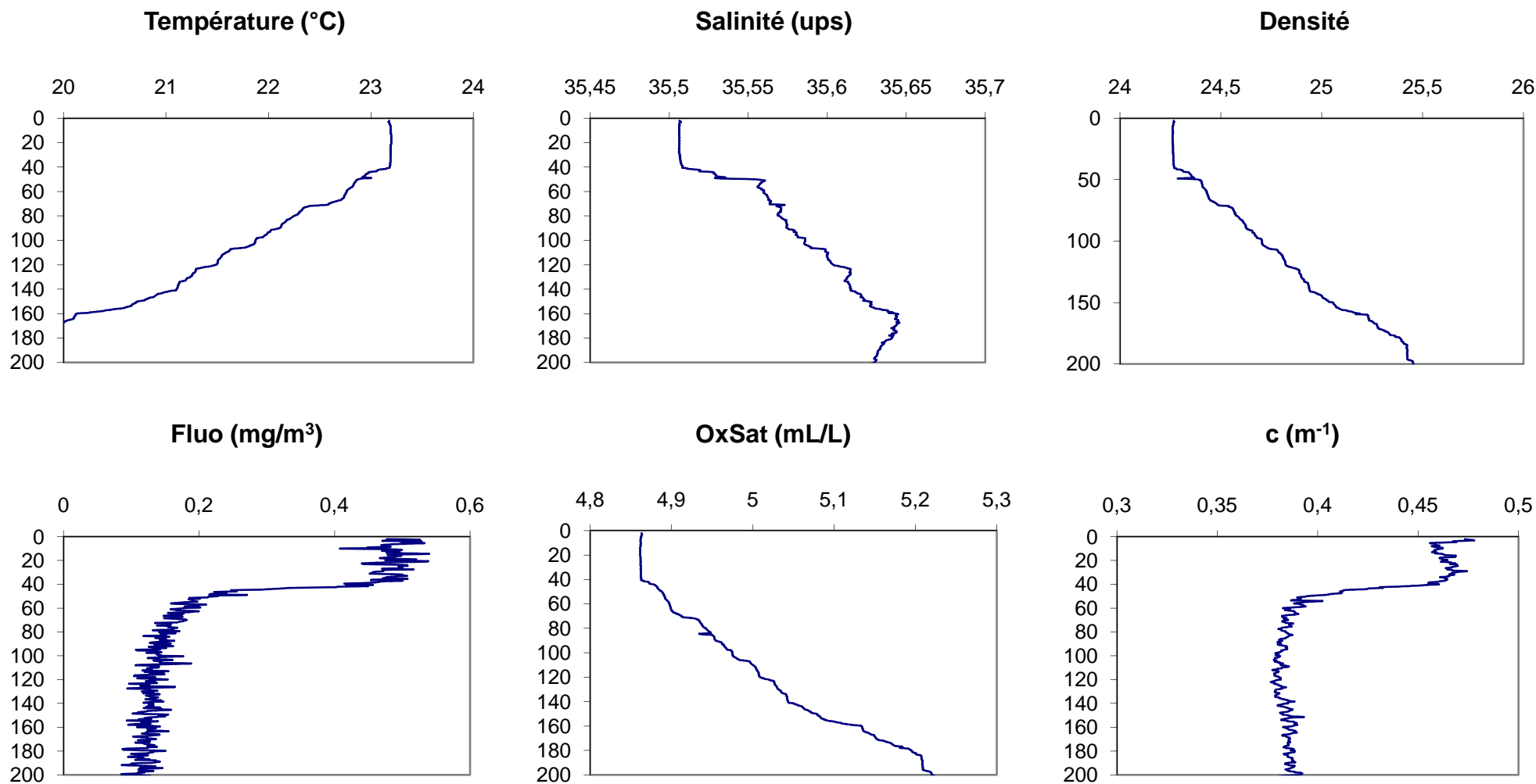
Station : 835

Latitude : 22.37° S

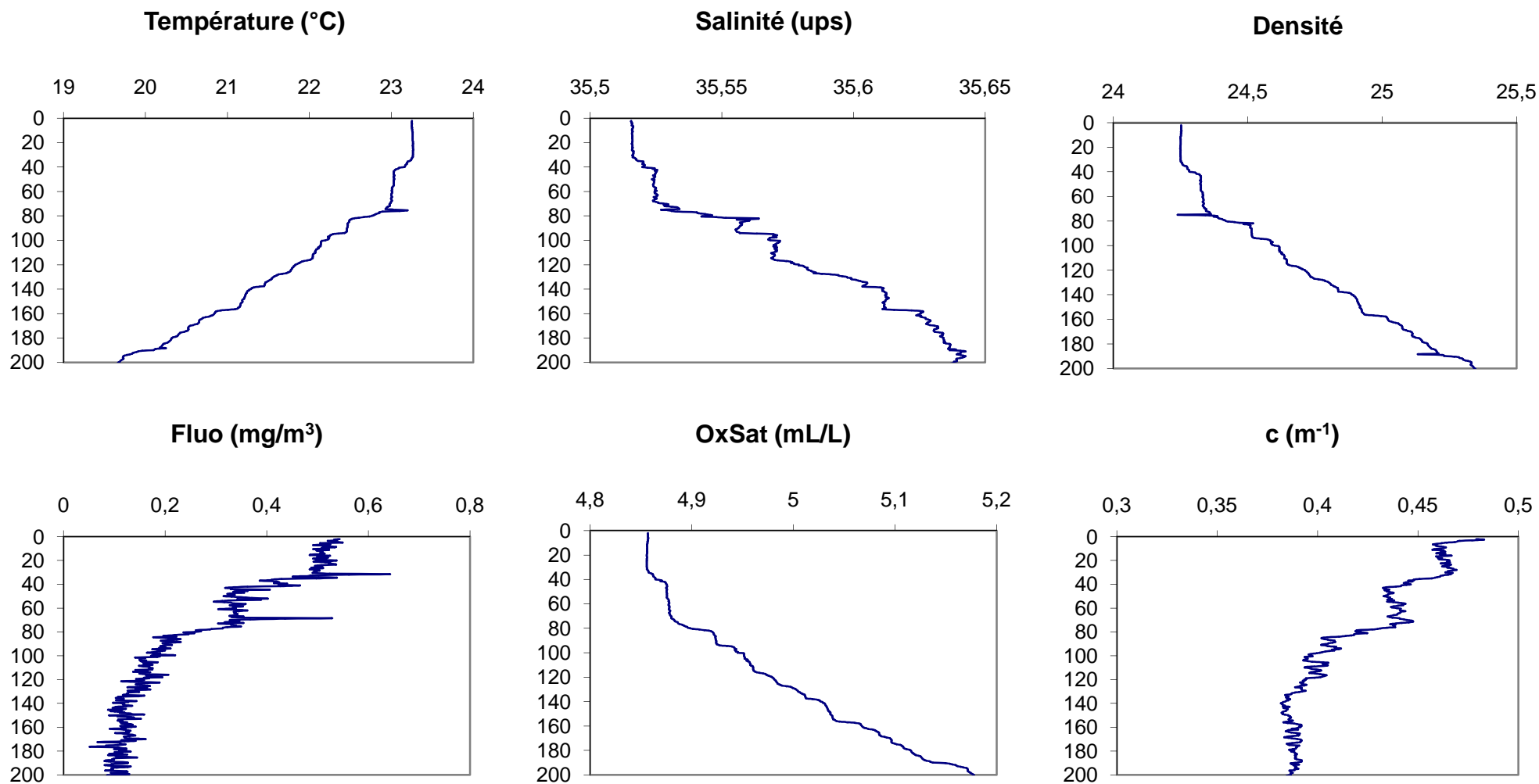
Longitude : 166.24° E

Temps Tu : 13/06/2003 à 19:54:01

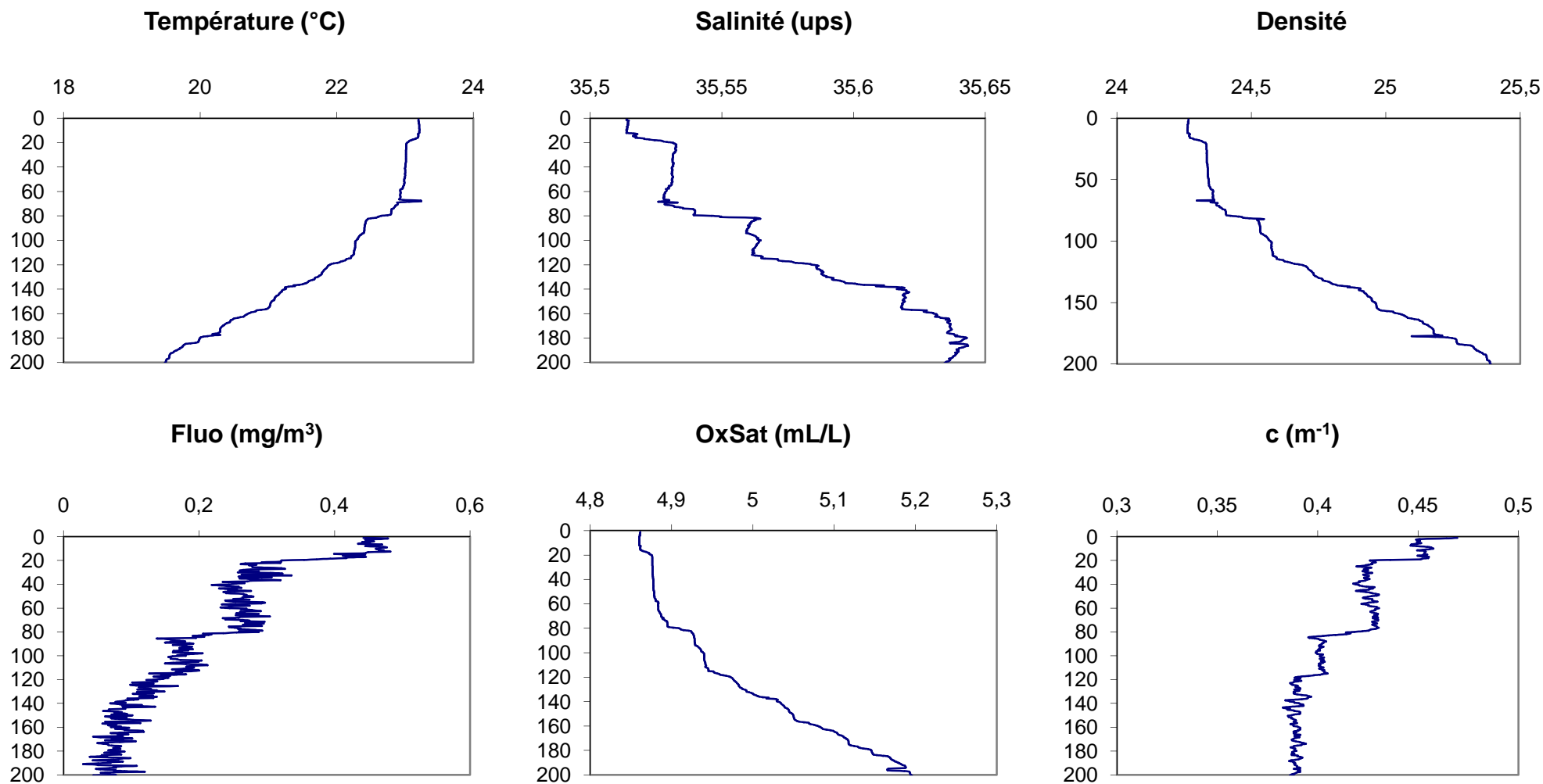
Temps local : 14/06/2003 à 06:54:01



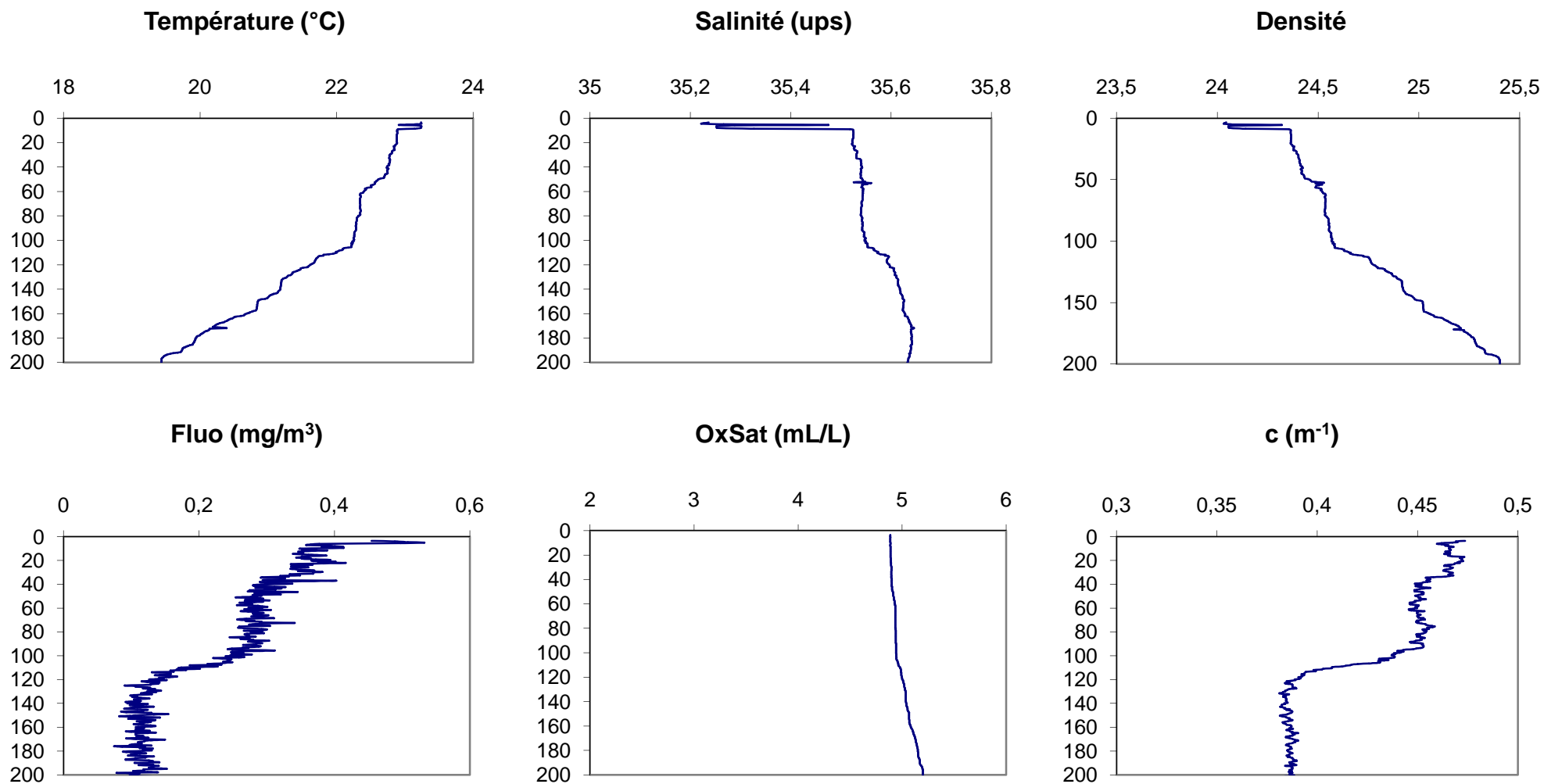
Station : 836 **Latitude : 22.39° S** **Longitude : 166.26° E**
Temps Tu : 13/06/2003 à 20:35:50 **Temps local : 14/06/2003 à 07:35:50**



Station : 837 **Latitude : 22.35° S** **Longitude : 166.22° E**
Temps Tu : 13/06/2003 à 21:26:04 **Temps local : 14/06/2003 à 08:26:04**

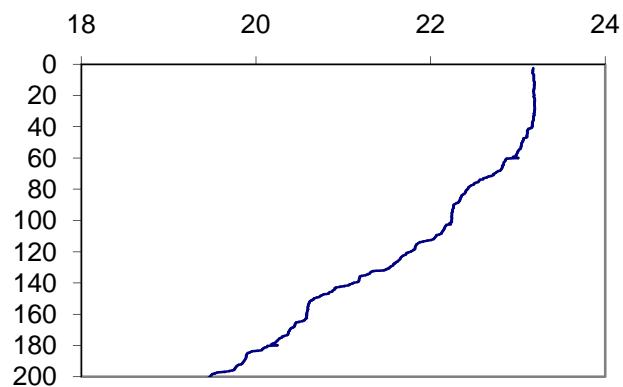


Station : 838 **Latitude : 22.36° S** **Longitude : 166.22° E**
Temps Tu : 13/06/2003 à 23:58:55 **Temps local : 14/06/2003 à 10:58:55**

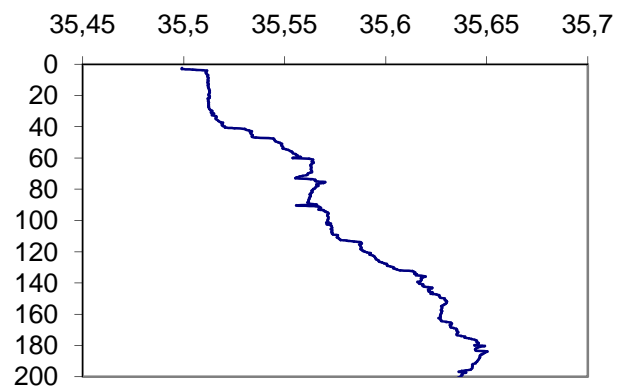


Station : 839 **Latitude : 22.38° S** **Longitude : 166.24° E**
Temps Tu : 14/06/2003 à 00:39:16 **Temps local : 14/06/2003 à 11:39:16**

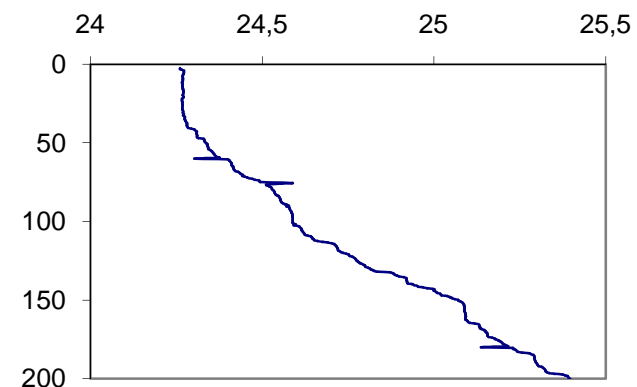
Température (°C)



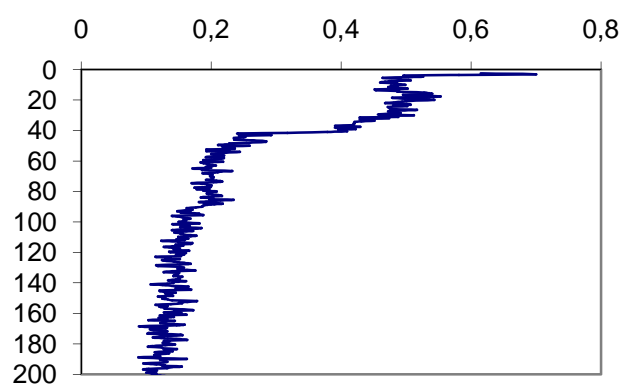
Salinité (ups)



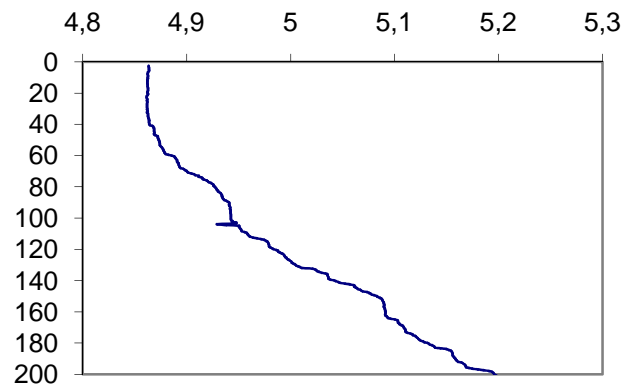
Densité



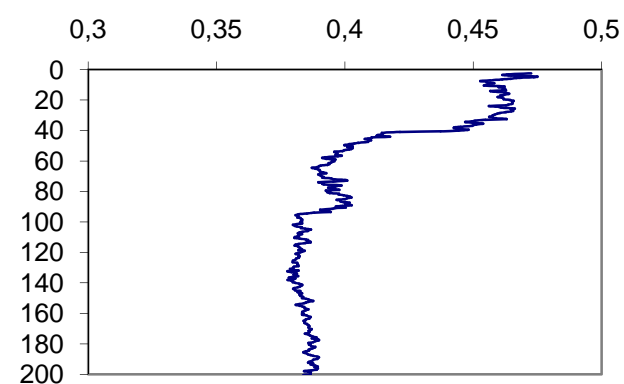
Fluo (mg/m³)



OxSat (mL/L)



c (m⁻¹)



Station : 840

Latitude : 22.39° S

Longitude : 166.26° E

Temps Tu : 14/06/2003 à 01:15:08

Temps local : 14/06/2003 à 12:15:08

