

Polar Research 31 (2013) in press.

RESEARCH/REVIEW ARTICLE

Tintinnid Ciliates of the Amundsen Sea (Antarctica) Plankton

John R. Dolan,¹ Eun Jin Yang,² Sang Hoon Lee² & Sun Young Kim³

¹ Université Pierre et Marie Curie and Centre National de la Recherche Scientifique (CNRS), UMR 7093, Laboratoire d'Océanographie de Villefranche, Marine Microbial Ecology, Station Zoologique, B.P. 28, 06230 Villefranche-sur-Mer, France, dolan@obs-vlfr.fr

² Division of Polar Climate Research, Korea Polar Research Institute, KORDI, Songdo Techno Park, Songdo, Yeonsu, Incheon 406-840, Korea, ejyang@kopri.re.kr

³ Department of Oceanography, Inha University, Incheon 402-751, Korea, sykim@kopri.re.kr

Correspondence

John R. Dolan, Marine Microbial Ecology Group, Laboratoire d'Océanographie de Villefranche, Université Pierre et Marie Curie and Centre National de la Recherche Scientifique (CNRS), UMR 7093, Station Zoologique, B.P. 28, 06230 Villefranche-sur-Mer, France. E-mail: dolan@obs-vlfr.fr

Keywords

zooplankton, microzooplankton, polynya, phytoplankton, ciliates, protists, tintinnida, Antarctica, *Phaeocystis*, diatoms

Abstract

The Amundsen Sea is one of the most productive and dynamic pelagic systems in Antarctica (e.g., Yager et al., 2012. *Oceanography* 25, 40-53) and also one of the least studied. Based on samples from 15 stations in the Amundsen Sea we describe for the first time the composition of the tintinnid ciliate assemblage of the microzooplankton. We compared the species compositions of coastal polynya sites, those with a phytoplankton community dominated by *Phaeocystis*, to those of the offshore deep water sites, dominated by diatoms. We found a total of 15 species. Polynya sites were dominated by a few species of tintinnids, mostly those endemic to the Southern Ocean. In contrast, the deep-water sites contained many widespread tintinnid species which are known from a wide variety of systems as well as other areas of the Southern Ocean. We examined polymorphism known to characterize the Antarctic tintinnid species *Cymatocylis affinis/convallaria* and *Codonellopsis gaussi*. We found that the types or forms found appeared unrelated to the type of microplankton community, defined by the identity of the dominant phytoplankton taxa. However, the number of different morphotypes found at a site appeared related to the overall concentration of the species, suggesting that different morphologies, previously considered distinct species, may simply be developmental stages.

Introduction

The Amundsen Sea is a dynamic region of the Antarctic. It was recently described as one "one of the most rapidly changing parts of the cyrosphere" (Smith et al. 2011) because it is receiving increasing amounts of meltwater from the West Antarctic Ice Sheet and experiencing winter warming (Ding et al. 2011). Studies based on data from satellite images have concluded that coastal areas of the Amundsen Sea are among the most productive in Antarctica (Arrigo & van Dijken 2003) and that primary production, perhaps fueled in part by increases in iron input from glacier meltwater, may increase in the future (Arrigo et al. 2012). Paradoxically, the Amundsen Sea is also one of the most poorly sampled areas of the Southern Ocean (Griffiths 2010; De Broyer et al. 2011) and has but recently become a focus of attention in biological oceanography. Primary production in the Amundsen Sea polynya are probably the most productive of any area in Antarctica (Yager et al. 2012). The Amundsen Sea

polynya, dominated by the colonial haptophyte *Phaeocystis antarctica*, may increase in relative importance in the future compared to the off-shore communities in which primary production is dominated by large diatoms (Alderkamp et al. 2012).

In the marine plankton tintinnid ciliates are one of the many distinct groups of organisms which make up the microzooplankton, the functional group of organisms nominally between 20 and 200 microns in maximal dimension, which are grazers feeding primarily on small phytoplankton sizes ranging from 2 to 20 microns. In most pelagic systems the microzooplankton are recognized to be the major consumers of primary production, accounting for the consumption of about 70% of daily production - including different areas of the Southern Ocean (Calbet and Landry 2004). Exceptions to this general rule are when primary production is dominated by large diatoms or *Phaeocystis* as is often the case in productive Southern Ocean waters (e.g. Burkill et al. 1995; Caron et al. 2000; Froneman 2004; Tsuda and Kawaguchi 1997). Tintinnids are, compared to oligotrich ciliates or heterotrophic dinoflagellates, generally a minority component of the microzooplankton (e.g. Dolan et al. 1999). However, there are records of tintinnids acting as the dominant consumers of phytoplankton (e.g. Karayanni et al. 2005).

The major predators of tintinnids are usually thought to be copepods although a wide variety of animals are known to consume tintinnids (Stoecker 2012). While there is no data from the Amundsen Sea, in other Southern Ocean systems, gut contents studies have shown that tintinnids are eaten by a variety of both pelagic and benthic organisms. Tintinnid loricae have been found in the guts of crustacean zooplankters such as copepods (Kruse et al. 2009; Lonsdale et al. 2000), krill and mysid shrimp (Mauchline 1980) the zooplankters usually considered the major consumers of microzooplankton (e.g. Froneman et al. 1996). However, other Southern Ocean animals, many not often thought of as predators of microzooplankton, have been found to contain the remains of tintinnids. These include the larger gelatinous zooplankton such as salps (Buck et al. 1992), chaetognaths (Hopkins 1987), and larval Antarctic Silverfish (Kellerman 1987). Some benthic organisms of the Antarctic have been found to contain the remains of tintinnids such as octocorals (Orejas et al. 2003) and deep sea isopods (Brökeland et

al. 2010). Thus, in the Southern Ocean tintinnids appear to be a widely exploited resource.

Unlike the numerically dominant taxa of the microzooplankton, the oligotrichid ciliates and heterotrophic dinoflagellates, tintinnids have species-specific shells or loricae. Hence, species identifications are relatively straightforward unlike most taxa of the microplankton. Generally, the tintinnid lorica is tubular or conical but a very large range of constructions are found among the different taxa. The diameter of open mouth-end of the lorica, the lorica oral diameter (LOD), is an important characteristic not only in terms of taxonomy but it is also a key ecological characteristic. A given species feeds at a maximum rate on prey of a size of about 25 % of LOD (Dolan 2010). In common with other protistan taxa with skeletal structures or shells, the characteristics of such hard parts are used to define species despite the fact that some tintinnid species are known to display considerably plasticity in lorica morphology (e.g., Laval-Peuto & Brownlee 1986). Indeed, some Antarctic taxa have long been suspected of showing morphological plasticity. The existence of forms intermediate between morphologies described as distinct species led to the suggestion that *Cymatocylis* species may be polymorphic (Boltovskoy et al. 1990; Williams et al. 1994) as well the species *Codonellopsis gaussi* (Alder 1999). Recent genetic studies have confirmed the suspected polymorphism of *Cymatocylis affinis* /*convallaria* and *Codonellopsis gaussi* (Kim et al. 2013). Remaining completely unknown is what factors may be associated with the existence of the different morphologies or forms.

In late 2010 the icebreaker *Araon* made its maiden voyage to Antarctica providing the opportunity to make the first direct measurements of primary production in the Amundsen Sea along with analysis of phytoplankton composition (Lee et al. 2012). During the cruise the stations sampled included both polynya and open water stations and at 15 of the stations material was obtained using a 20 μ m plankton net for the analysis of the microplankton community (Fig. 1). To our knowledge this is the first report on the ecology and species composition of tintinnids of the Amundsen Sea. The only existing data is part of the total ciliate species inventory from the study of Wickham et al. (2011) who provided a species list pooled from several Bellinghausen and Amundsen Sea stations, and the recent study of morphology and

phylogeny of selected taxa by Kim et al. (2013). Here we present data on the composition and distribution of the tintinnid assemblage of the Amundsen Sea. We sought to determine if the tintinnid assemblages found in the non-polynya stations, primarily open deep waters, in which the microplankton community is dominated by diatoms, differed from those found in the coastal polynya stations, dominated by *Phaeocystis*. We also sought to determine if different forms or morphotypes of the polymorphic species *Cymatocylis affinis/convallaria* and *Condonellopsis gaussi* co-occur or are found in different microplankton communities. Here we use the name *Cymatocylis affinis/convallaria* to remain in conformity with the existing literature (e.g., Boltovskoy et al. 1990, Wasik & Mikolajczyk 1994).

Materials and methods

The data reported are from measures made aboard, and samples gathered, during the cruise of the Korean Research Icebreaker *Araon* in the Amundsen Sea in December 2010 - January 2011. A Niskin bottle rosette equipped with CTD probes was used to sample a total of 30 stations and plankton net tows were performed to assess microplankton community composition at 15 of the 30 stations sampled (Fig. 1). Stations were located in both deep offshore waters and polynya areas, considered as coastal areas of open water (free of sea ice) within the sea ice zone; areas of sea ice and concentrations were based on data from the National Snow and Ice Data Center (<http://nsidc.org>) corresponding to the cruise period. The classification of stations used here follows that established in Lee et al. (2012).

For chlorophyll *a* determinations, water samples of 0.3-1 L were obtained from 7-9 discrete depths between the surface and 150 m depth. Water samples were filtered through a 0.7 μm Whatman glass fiber filter (GF/F) and chlorophyll concentrations determined onboard using a Turner Designs Trilogy model fluorometer calibrated using commercial chl *a* standards.

Net tows were made with a 20- μm plankton net of 0.45 m diameter, equipped with a calibrated flowmeter, towed from 150 m depth to the surface. A portion of the net tow material was fixed with Bouin's (6% final concentration) for direct microscopic examination. In the laboratory, aliquots of net tow material were sequentially diluted and examined in settling chambers using an inverted microscope equipped with DIC

optics. The entire surface of the settling chamber was examined at 200x total magnification. Species identifications were made using the monographs of Kofoid & Campbell (1929; 1939), Hada (1970), Balech (1973) and Alder (1999). Total sample volumes examined varied, depending on the concentrations of tintinnids and the dilutions employed varied according to concentrations of phytoplankton. However, multiple aliquots were examined until at least 50 tintinnids were enumerated for each station (tintinnids enumerated per stations: range = 52-358, avg 172 ± 139). The sample volumes examined were equal to 1-7 ml of the original 350 ml total net tow material, representing material from about 10 to 400 liters filtered by the net. Nominal concentrations of organisms were calculated based on the apparent volume filtered by the net (as indicated the by net flowmeter) and the volume of net tow material examined. It should be noted that the concentrations reported here are the average values per liter for the top 150 m of the water column. In general, relatively few cells are found below the mixed layer (e.g., Dolan & Marassé 1995). Consequently, the concentrations of cells in the mixed layer were likely several times higher than those reported here which represent the entire 150 m water column. For several stations we also enumerated copepod nauplii as a proxy measure of copepod abundance. Simple linear regression was used to investigate the relationships between concentrations (log transformed) of tintinnids and chlorophyll as well as occurrences of different morphotypes.

Results

The physical and biological characteristics of the offshore deep water stations differed considerably from those of the coastal polynya stations. The polynya stations, compared to the non-polynya, primarily offshore sites, were characterized by shallower mixed layer depths (Table 1), considerably higher chlorophyll *a* concentrations with a distinct chlorophyll maximum, and high primary production (Table 2 and Fig. 2). The offshore stations were comparatively low in concentrations of chlorophyll and showed more even vertical distributions of chlorophyll. The phytoplankton dominating the microplankton communities were distinctly different as well. In the deep water offshore stations, the microplankton was dominated by diatoms while in the polynya stations microplankton was dominated by *Phaeocystis*

(Table 2, Fig. 3). It should be noted that our observations concerning phytoplankton composition refer to the microplankton community, not the entire phytoplankton community.

A total of 15 species with a wide range of morphologies were encountered in the samples as well a variety of morphotypes of two Antarctic species, *Codonellopsis gaussi* and *Cymatocylis affinis/convallaria* (Table 3, Fig. 4). Typically, low species-richness (2-4 species) characterized the polynya assemblages compared to the non-polynya assemblages (4-10 species). Furthermore, polynya assemblages were generally dominated by species endemic to the Southern Ocean (largely forms of *Cymatocylis affinis/convallaria* and *Codonellopsis gaussi*) while the offshore assemblages included many widespread tintinnid taxa (Table 3).

Overall, the abundance of tintinnids was clearly not related to bulk chlorophyll concentrations (Table 2). However, plotting chlorophyll data by the dominant type of phytoplankton (diatom, *Phaeocystis*, or both) suggested that within *Phaeocystis*-dominated communities, tintinnid abundance increased with chlorophyll concentrations (Fig. 5). Note that we have no data on the abundance of nano-phytoplankton such as the single-cell forms of *Phaeocystis* or other probable major prey items for tintinnid ciliates.

We found no clear relationship between the composition of the micro-phytoplankton and the occurrence of different morphologies of *Codonellopsis gaussi* nor those of *Cymatocylis affinis/convallaria*. Of the many different 'forms' or morphotypes encountered (Fig. 4), most were found in both the diatom-dominated offshore stations and the *Phaeocystis*-dominated polynya stations (Table 3). There was also no relationship between the number of morphotypes co-occurring and the concentration of chlorophyll, regardless of the identity of the taxa dominating the phytoplankton. However, there was a weak but significant positive relationship between the number of different morphotypes found in an assemblage and the overall concentration of *C. affinis/convallaria* (Fig. 6). There was also a positive trend between the numbers of *C. gaussi* morphotypes or forms found and the overall concentration of *C. gaussi* but not a significant linear relationship.

Discussion

We documented a species-richness for the Amundsen Sea far in excess of that known for the adjacent Bellinghausen Sea (Table 4). No doubt our results reflect the fact that we examined material from large volumes of water sampled with a relatively fine-mesh net. Interestingly, most (9 out of the 15 species) were 'widespread' species, those found in a variety of systems ranging from the Mediterranean Sea (Dolan 2000) to the Pacific Ocean (Dolan et al. 2007) and all were species which have been previously recorded from other Southern Ocean locations, if not the Bellinghausen Sea (see Dolan et al. 2012). Thus, none of our species records for the Amundsen Sea are new for the Southern Ocean. However, we did establish for the first time the existence of distinct tintinnid communities in polynya and offshore deep water based on our data concerning the Amundsen Sea.

In the polynya stations, where the microplankton community was dominated by *Phaeocystis*, the tintinnid assemblage was a particular subset of the species catalogue. Only 4 species were found and 3 of the 4 are species endemic to the Southern Ocean: *Cymatocylis affinis/convallaria*, *Codonellopsis gaussi*, *Laackmanniella prolongata*. These Southern Ocean species are all relatively wide-mouth species, with LOD of 40 -100 μm , presumably feeding most efficiently on prey much larger than those exploited by most of the other species found in the Amundsen Sea (see Fig 4). While there were few data points, it was only among the polynya stations that there appeared to be a relationship between the concentrations of chlorophyll and tintinnids (Fig. 5). However, it is unclear if the relationship could reflect a predator-prey relationship between *Phaeocystis* and tintinnids. Typical planktonic ciliates, such as oligotrichs are unable to graze on colonies of *Phaeocystis* and ingest only the individual free-swimming cells (e.g., Verity 2000). However, tintinnids reportedly can ingest cells from the outer layer of colonies of *Phaeocystis*, cropping individual cells, as well as feeding on the free-swimming stage (Admiraal & Venekamp 1986). An alternative, but not exclusive, explanation for a positive relationship between *Phaeocystis* concentration and tintinnid abundance is that predation on tintinnids is lower in such communities due to either lower predator abundance or lower predator feeding efficiency with increasing concentrations of *Phaeocystis*. Many polynya areas are known to be characterized by relatively low

abundances of zooplankton (e.g., Tagliabue & Arrigo 2003) and this appears to be the case for Amundsen Sea polynya as well (Yager et al. 2012).

We do not have data on the abundance of predators of tintinnids in our polynya compared to non-polynya stations, only some indirect evidence in the form of copepod naupliar concentrations. Our data on copepod nauplii abundance (Table 2) suggests little difference between polynya stations and off-shore stations. However, this is weak evidence of no difference in top-down control of tintinnid composition. Regardless of the mechanism influencing tintinnid species composition found in *Phaeocystis*-dominated sites, the projected increase in the relative importance of *Phaeocystis* in the Amundsen Sea (Alderkamp et al. 2012) may be accompanied by increases in the relative importance of the endemic Antarctic species (i.e., *Cymatocylis*, *Laackmaniella*) at the expense of the widespread species found in the diatom-dominated microplankton communities.

We were also interested in examining the phenomenon of polymorphism in the species *Cymatocylis affinis* and *Codonellopsis gaussi* (Fig. 4). Our working hypothesis was that distinct morphologies represent adaptations to distinct conditions. However, we found no evidence that particular morphologies are associated with particular phytoplankton communities. A nearly full range of morphologies was found in microplankton communities dominated by diatoms as well as communities dominated by *Phaeocystis* (Table 3). The number of morphotypes found in individual samples was also unrelated to the number of cells enumerated (data not shown). Also, the number of different morphologies found in an assemblage appeared unrelated to the concentration of chlorophyll, regardless of the type of phytoplankton assemblage (Fig. 6a, 6c).

An alternative explanation for polymorphism is that rather than representing adaptations to a particular environment, the different morphologies found are simply different developmental stages. In this regard it should be noted that in tintinnids, which reproduce by cell division, the lorica is retained by the newly formed daughter cell, the opisthe, and the cell with the parental mouth, the protor, swims off and forms a new lorica (see Agatha et al. 2012). Consequently, in a population of tintinnids there are both 'old' and 'new' loricas. The loricas inhabited by many of the tintinnids in

a population were formed not by the current inhabitants but rather by ancestral cells and not necessarily direct ancestors but possibly several generations removed.

We speculate that a population of tintinnids, if it is relatively long-lived and experiences rapid bursts of population growth, is liable to contain loricas formed by cells which divided before lorica formation was complete. These partially-formed loricas could be retained in the population, inherited by successive generations. Unfortunately we cannot directly examine this possibility. However, if polymorphism simply reflects different developmental stages, we reasoned that dense populations would exhibit more polymorphism than sparse populations as dense populations are more likely to show characteristics of rapid population growth and thus contain more 'immature individuals' corresponding to different morphotypes or forms. We found some evidence in support of the hypothesis as the concentration of *Cymatocylis affinis/convallaria* was positively related to the number of morphotypes in the population (Fig. 6b). A positive (although not significant) trend was also apparent in *Condonellopsis gaussi* (Fig. 6d). Note that these trends were not dependent on the overall number of individuals examined for each station.

Conclusion

We found a high species-richness in the Amundsen Sea compared to the better-known adjacent Bellingshausen Sea. We compared, for the first time, the species assemblages of coastal polynya sites, projected to increase in relative importance in the future, with offshore deep water sites. The polynya sites of high primary production dominated by *Phaeocystis*, show a lower species richness and are formed mainly of large-mouthed tintinnid species endemic to the southern Ocean. In the polymorphic species *Cymatocylis affinis/convallaria* and *Codonellopsis gaussi* the number of types or forms found co-occurring appeared related to the overall concentration of the species, suggesting that the different morphologies may simply be developmental stages.

Acknowledgements

Support for this work was provided by the Korean Polar Research Institute through the KOPRI project PP 12010 as well as the CNRS, the University of Paris 6 and the project AQUAPARADOX, financed by the ANR program Biodiversité and the Pole Mer PACA. The thoughtful comments of the reviewers and Steve Wickham are gratefully acknowledged.

References

- Admiraal W. & Venekamp L.A.H. 1986. Significance of tintinnid grazing during blooms of *Phaeocystis pouchetii* (Haptophyceae) in Dutch coastal waters. *Netherlands Journal of Sea Research* 20, 61-66.
- Agatha S., Laval-Peuto M. & Simon P. 2012. The tintinnid lorica. In J.R. Dolan, D. J.S. Montagnes, S. Agatha & D.K. Stoecker (eds): *The Biology and Ecology of Tintinnid Ciliates: Models for Marine Plankton*. Pp 17-41. Oxford: Wiley-Blackwell.
- Alder V.A. 1999. Tintinnoinea. In D. Boltovskoy (ed): *South Atlantic Zooplankton, Volume 1*. Pp. 321-384. Leiden: Backhuys Publishers.
- Alder V.A. & Boltovskoy D. 1991. The ecology and biogeography of tintinnid ciliates in the Atlantic sector of the Southern Ocean. *Marine Chemistry* 35, 337-346.
- Alderkamp A.-C., Mills M.M., van Dijken G.L., Laan P., Thuroczy C.-E., Gerringa L.J.A., de Baar H.J.W., Payne C.D., Visser R.J.W., Buma A.G.J. & Arrigo K.R. 2012. Iron from melting glaciers fuels phytoplankton blooms in the Amundsen Sea (Southern Ocean): phytoplankton characteristics and productivity. *Deep-Sea Research II* 71-76, 32-48.
- Arrigo, K. R. & van Dijken G.L. 2003. Phytoplankton dynamics within 37 Antarctic coastal polynya systems. *Journal of Geophysical Research* 108(C8), 3271, doi:10.1029/2002JC001739, 2003.
- Arrigo K.R., Lowry, K.E. & van Dijken G.L. 2012. Annual changes in sea ice and phytoplankton in polynyas of the Amundsen Sea, Antarctica. *Deep-Sea Research II* 71-76, 5-15.
- Balech E. 1947. Contribucion al conocimiento del plancton antartico. Plancton del Mar de Bellingshausen. *Physis, Buenos Aires* 20, 75-91.

Balech E. 1973. Segunda contribucion al conocimiento del plancton del Mar de Bellingshausen. *Contribucion del Instituto Antartico Argentino* 107, 3-63

Barria de Cao M.S. 1987. Tintinnia (Protozoa, Ciliata) de la zona Antartica Argentina. In: *Primer Symposium Espanol de Estudios Antarticos*, Madrid: Consejo Superior de Investigaciones Cientificas Asociacion "Espana en la Antartida", Pp 275-284.

Boltovskoy D., Dinofrio E.O. & Alder V.A. 1990. Intraspecific variability in Antarctic tintinnids: the *Cymatocylis affinis/convallaria* species group. *Journal of Plankton Research* 12, 403-413.

Brökeland, W., Guomundsson, G. & Svavarsson, J. 2010. Diet of four species of deep-sea isopods (Crustacea : Malacostraca: Peracarida) in the South Atlantic and the Southern Ocean. *Marine Biology* 157,177-187.

Buck K.R., Garrison D.L. & Hopkins T.L. 1992 Abundance and distribution of tintinnid ciliates in an ice edge zone during the austral autumn. *Antarctic Science U.S.A.* 4, 3-98.

Burkill, P.H., Edwards, E.S. & Sleigh, M.A. 1995. Microzooplankton and their role in controlling phytoplankton growth in the marginal ice zone of the Bellingshausen Sea. *Deep-Sea Res. II*, 42:1277-1290.

Calbet A. & Landry M.R. 2004. Phytoplankton growth, microzooplankton grazing, and carbon cycling in marine systems. *Limnology and Oceanography* 49, 51–57.

Caron D.A., Denett M.R., Lonsdale D.J., Moran D.M. & Shalapyonok L. 2000. Microzooplankton herbivory in the Ross Sea, Antarctica. *Deep-Sea Research II* 47, 3249-3272.

De Broyer C., Danis B. & 64 SCAR-MarBIN Taxonomic Editors 2011. How many species in the Southern Ocean? Towards a dynamic inventory of the Antarctic marine species. *Deep-Sea Research II* 58, 5-17.

Ding Q., Steig, E.J., Battisti D.S & Küttel M. 2011. Winter warming in West Antarctica caused by central tropical Pacific warming. *Nature Geoscience* 4, 398-403.

Dolan J. R. 2000. Tintinnid ciliate diversity in the Mediterranean Sea: Longitudinal patterns related to water column structure in late spring-early summer. *Aquatic Microbial Ecology* 22: 69-78

Dolan, J.R. 2010. Morphology and ecology in tintinnid ciliates of the marine plankton: correlates of lorica dimensions. *Acta Protozoologica* 49, 235-344.

Dolan, J.R. & Marrassé C. 1995. Planktonic ciliate distribution relative to a deep chlorophyll maximum: Catalan Sea, N. W. Mediterranean, June 1993. *Deep-Sea Research I* 42, 1965-1987.

Dolan J.R., Claustre H. & Vidussi F. 1999. Planktonic ciliates in the Mediterranean Sea: longitudinal trends. *Deep-Sea Research I* 46, 2025-2039.

Dolan J.R., Pierce R.W., Yang E.J. & Kim S.Y. 2012. Southern Ocean biogeography of tintinnid ciliates of the marine plankton. *Journal of Eukaryotic Microbiology* 59, 511-519.

Dolan, J.R., Ritchie, M.R. & Ras J. 2007. The neutral community structure of planktonic herbivores, tintinnid ciliates of the microzooplankton, across the SE Pacific Ocean. *Biogeosciences* 4, 297-310

Froneman, P.W. 2004. Protozooplankton community structure and grazing impact in the eastern Atlantic sector of the Southern Ocean in austral summer 1998. *Deep-Sea Research II* 51, 2633-2643.

Froneman P.W., Pakhomov E.A., Perissinotto, R. & McQuaid C.D. 1996. Role of microplankton in the diet and daily ration of Antarctic zooplankton species during austral summer. *Marine Ecology Progress Series* 143,15-23.

Griffiths, H. J. 2010. Antarctic marine biodiversity - What do we know about the distribution of life in the Southern Ocean? *PLoS ONE* 5, e11683.doi:10.1371/journal.pone.0011683

Hada Y. 1970. The protozoan plankton of the Antarctic and Subantarctic Seas. *Japanese Scientific Research Expedition Scientific Reports* 31, 1-51.

Hopkins, T.L. 1987. Midwater food web in McMurdo Sound, Ross Sea, Antarctica. *Marine Biology* 96, 93-106.

Karayanni H., Christaki U., Van Wambeke F., Denis M. & Moutin T. 2005. Influence of ciliated protozoa and heterotrophic nanoflagellates on the fate of primary production in the northeast Atlantic Ocean. *Journal of Geophysical Research* 110, C07S15.

Kellermann A. 1987. Food and feeding ecology of postlarval and juvenile *Pleurogramma antarcticum* (Pisces; Notothenioidei) in the seasonal pack ice zone off the Antarctic Peninsula. *Polar Biology* 7, 307-315

Kim S.Y., Choi J.K., Dolan J.R., Shin H.C., Lee S.-H. & Yang E.J. 2013. Morphological and ribosomal DNA-based characterization of six Antarctic Tintinnid ciliates from the Amundsen Sea with phylogenetic analyses. Submitted to *Journal of Eukaryotic Microbiology* (in revision).

Kofoed C.A. & Campbell A.S. 1929. A Conspectus of the Marine and Freshwater Ciliata Belonging to the suborder Tintinnoinea, with Descriptions of New Species Principally from the Agassiz Expedition to the Eastern Tropical Pacific 1904-1905. *University of California Publications in Zoology* 34,1-403.

Kofoed C.A., & Campbell A.S. 1939. Reports on the scientific results of the expedition to the Eastern Tropical Pacific, in charge to Alexander Agassiz, by U.S. Fish Commission Steamer "Albatross" from October 1904 to March 1905, Lieut. Commander L.M. Garrett, U.S.N. commanding. 37. The Ciliata: The Tintinnoinea. *Bulletin of the Museum of Comparative Zoology, Harvard University* 84,1-473.

Kruse S., Jansen S., Krägefsky S. & Bathman U. 2009. Gut content analysis of three dominant Antarctic copepod species during an induced phytoplankton bloom EIFEX (European iron fertilization experiment). *Marine Ecology* 30, 301-312.

Laval-Peuto M. & Brownlee D.C. 1986. Identification and systematics of the Tintinnina (Ciliophora): evaluation and suggestion for improvement. *Annales de l'Institut Océanographique Paris* 62, 69-84.

Lee S.H., Kim B.K., Yun M.S., Joo H., Yang E.J., Kim Y.N., Shin H.C. & Lee, S. 2012. Spatial distribution of phytoplankton productivity in the Amundsen Sea, Antarctica. *Polar Biology* in press (doi:10.1007/s00300-011-1070-6)

Lonsdale D.J., Caron D.A., Dennett M.R. & Schaffner R. 2000. Predation by *Oithona* spp. on protozooplankton in the Ross Sea, Antarctica. *Deep-Sea Research II* 47, 3273-3283.

Mauchline J. 1980. The biology of Mysids and Euphausiids. *Advances in Marine Biology* 18, 3-681.

Orejas C., Gili J.-M. & Arntz W. 2003. Role of small-plankton communities in the diet of two Antarctic octocorals (*Primnopsis antarctica* and *Primnoella* sp.). *Marine Ecology Progress Series* 250, 105-116.

Sassi R. & Melo G.D.N. 1986. Tintinnina (Protozoa - Ciliophora - Oligotrichida) from the First Brazilian Expedition to the Antarctic. *Anais da Academia Brasileira de Ciências* 58, 63-84

Smith J.A., Hillenbrand C.D., Kuhn G., Larter R.D., Graham A.G.C., Ehrmann, W., Moreton S.G. & Forwick M. 2011. Deglacial history of the west Antarctic Ice Sheet in the western Amundsen Sea Embayment. *Quaternary Science Reviews* 30, 488-505.

Stoecker DK. 2012. Predators of Tintinnids. In J.R. Dolan, D. J.S. Montagnes, S. Agatha & D.K. Stoecker (eds): *The Biology and Ecology of Tintinnid Ciliates: Models for Marine Plankton*. Pp 122-145. Oxford: Wiley-Blackwell.

Tagliabue A. & Arrigo K.R. 2003. Anomalously low zooplankton abundance in the Ross Sea: an alternative explanation. *Limnology and Oceanography* 48, 686-699.

Tsuda A. & Kawaguchi S. 1997. Microzooplankton grazing in the surface water of the Southern Ocean during an austral summer. *Polar Biology* 18, 240-245.

Verity P.G. 2000. Grazing experiments and model simulations of the role of zooplankton in *Phaeocystis* food webs. *Journal of Sea Research* 43, 317-343.

Wasik A. & Mikolaczyk E. 1994. Infracilature of *Cymatocylis affinis/convallaria*. *Acta Protozoologica* 33, 79-85.

Wasik, A., Mikolaczyk E. & Ligowski R. 1996. Agglutinated loricae of some Baltic and Antarctic Tintinnina species (Ciliophora). *Journal of Plankton Research* 18, 1931-1940.

Wickham S.A., Steinmair U. & Kamennaya N. 2011. Ciliate distributions and forcing factors in the Amundsen and Bellingshausen Seas (Antarctica). *Aquatic Microbial Ecology* 62, 215-230.

Williams R., McCall H., Pierce R.W. & Turner J.T. 1994. Speciation of the tintinnid genus *Cymatocylis* by morphometric analysis of the loricae. *Marine Ecology Progress Series* 107, 263-272.

Yager P.L., Sherrell R.M., Stammerjohn S.E., Alderkamp A.-J., Schofield O., Abrahamsen E.P., Arrigo K.R., Bertilsson S., Garay D.L., Guerrero R., Lowry K.E.,

Moksnes P.P., Ndungu, K., Post A.F., Randall-Goodwin E., Riemann L., Severmann, S., Thatje S., van Dijken G.L. & Wilson S. 2012. ASPIRE the Amundsen Sea Polynya International Research Expedition. *Oceanography* 25, 40-53.

Table One. Locations and physical characteristics of the sample stations (see also Fig. 1). Bold numbers in red denote polynya stations, station 8 was a marginally polynya station, not completely free of sea ice. Station type, mixed layer and euphotic zone depth from, and methods described in, Lee et al. (2012).

Station	Lat	Long	Date	Depth	% Sea Ice	Mixed layer depth	Euphotic layer depth
1	63.99	108.99	12/26/10	4990	0	21	45
2	65.69	111.26	12/27/10	4838	0	12	60
4	68.47	116.74	12/28/10	4000	0	13	70
5	70.00	120.02	12/29/10	2900	50-60	13	60
6	71.95	119.13	12/30/10	1451	50-60	18	ND
7	72.41	117.69	12/31/10	530	30-40	15	54
8	72.83	116.48	12/31/10	640	10	22	ND
9	73.25	115.00	01/01/11	1050	0	54	50
18	73.00	113.50	01/06/11	448	0	20	20
21	73.50	116.50	01/06/11	376	0	25	ND
22	72.45	120.14	01/07/11	1360	60-70	16	ND
26	71.49	116.95	01/08/11	1364	70-80	22	ND
27	69.00	120.50	01/11/11	1140	0	20	40
28	68.00	120.00	01/11/11	4300	0	12	ND
29	67.00	120.00	01/12/11	4520	0	12	25
30	64.91	131.27	01/13/11	4820	0	14	70

Table Two. Biological characteristics of the stations. Average chlorophyll a (Avg Chl) in $\mu\text{g l}^{-1}$ integrated throughout the top 150 m of the water column; the maximum concentration of chlorophyll is given as Max Chl ($\mu\text{g l}^{-1}$) and the depth of the chlorophyll maximum (m) as Z Chl Max. Avg PP denotes primary production in $\mu\text{g carbon l}^{-1} \text{h}^{-1}$ integrated throughout the euphotic zone (see Table 1 for euphotic zone depth); primary production data (^{14}C - based) are from Table 2 in Lee et al. (2012) estimated at a few of the stations sampled for microplankton. Microphytoplankton composition, based on examination of net tow material, was clearly dominated by either diatoms (D), *Phaeocystis* (P) or mixture of both (D/P). Tintinnid concentrations and number of species (# spp) in the top 150 m of the water column. Values in red denote data corresponding to polynya stations or near polynya conditions (station 8).

Station #	Avg Chl (150 m)	Max Chl	Z Chl max	Avg PP (Euphotic layer)	Micro-Phyto	Copepod Nauplii	Tintinnids (Cells l^{-1})	# spp
1	0.4	0.8	40	-	D/P	-	4.9	7
2	0.3	0.5	55	-	D	-	9.8	7
4	0.2	0.3	80	0.009	D	-	5.5	4
5	0.2	0.3	60	0.054	D	-	0.1	4
6	0.3	0.6	35	-	D/P	-	1.3	7
7	0.6	1.8	20	0.327	D	-	3.2	6
8	1.6	5.2	15	-	P	0.5	2.4	4
9	5.6	11.9	10	3.500	P	-	-	2
18	2.5	12.2	5	1.935	P	1.2	5.4	4
21	4.1	11.4	5	-	P	0.9	7.3	4
22	0.4	1.0	25	-	D/P	-	7.2	5
26	0.2	0.4	30	0.028	D	-	4.3	5
27	0.3	0.4	70	-	D	0.8	1.1	5
28	0.2	0.4	5	-	D	1.9	8.8	4
29	0.3	0.7	10	-	D	0.3	2.6	7
30	0.4	1.1	27	0.176	D	-	6.5	10

Table Three. Species records for each station with the station numbers in red denoting the polynya stations or near polynya conditions (station 8). The distributional type is based on the biogeographic classifications from Dolan et al. 2012. Note that most species were absent from the polynya stations. The species found in polynya were exclusively the Southern Ocean endemic forms except for *Salpingella faurei*. Note that the species *Codonellopsis gaussi* and *Cymatocyliis convallaria* group forms previously considered separate species in some reports.

Species	Station Occurrence	Distributional type
<i>Acanthostomella obtusa</i>	1,2	widespread
<i>Amphorellopsis laevis</i>	27	widespread
<i>Amphorellopsis quinqueala</i>	1,26,7,22,26,29,30	Southern Ocean
<i>Amphorides laackmanni</i>	29	widespread
<i>Codonellopsis gaussi</i>	1,2,4,5,6,7,18,21,26,28,29,30	Southern Ocean
<i>Codonellopsis gaussi f. cylindroconica</i>	1,2,4,5,6,18,27,28,29,30	Southern Ocean
<i>Codonellopsis gaussi f. coxiella</i>	6	Southern Ocean
<i>Codonellopsis gaussi f. globosa</i>	30	Southern Ocean
<i>Codonellopsis pusilla</i>	2,30	widespread
<i>Cymatocyliis convallaria f. affinis</i>	1,2,5,6,7,8,9,18,21,22,26,28	Southern Ocean
<i>Cymatocyliis convallaria f. calcyformis</i>	1,2,26,30	Southern Ocean
<i>Cymatocyliis convallaria f. cylindrica</i>	1	Southern Ocean
<i>Cymatocyliis convallaria f. drygalski</i>	1,2,5,6,7,8,9,18,21,22,26,29	Southern Ocean
<i>Cymatocyliis convallaria f. subrotundata</i>	18	Southern Ocean
<i>Cymatocyliis parva</i>	1,2,6	Southern Ocean
<i>Epilpocycloides reticulata</i>	1,8,21	widespread
<i>Laackmanniella navaecula</i>	4,6	Southern Ocean
<i>Laackmanniella prolongata</i>	2,4,5,6,7,8,9,18,21,22,26,27,28,29,30	Southern Ocean
<i>Salpingella curta</i>	6	widespread
<i>Salpingella decurtata</i>	29,30	widespread
<i>Salpingella faurei</i>	1,4,5,6,7,8,18,21,22,26,27,28,29,30	widespread
<i>Salpingella laackmaniella</i>	7,22,27	widespread

Table Four. Species records of the Amundsen Sea and the adjacent Bellinghausen Sea. Species names in bold are endemic to the Southern Ocean, the others are known from a wide range of areas including other regions of the Southern Ocean (Dolan et al. 2012). Species now known to be forms or morphological variants of *Cymatocylis affinis/convallaria* and variants of *Codonellopsis gaussi* (see Table 3) are not listed separately.

Species	Bellinghausen Sea	Amundsen Sea	Bellinghausen/Amundsen
<i>Acanthostomella obtusa</i>		this report	
<i>Amphorellopsis laeva</i>		this report	
<i>Amphorellopsis quinquealata</i>	Balech 1973	Kim et al. 2013, this report	
<i>Amphorides laackmanni</i>		this report	Wickham et al. 2011
<i>Codonellopsis balechi</i>	Balech 1973		
<i>Codonellopsis biedermanni</i>			Wickham et al. 2011
<i>Codonellopsis gaussi</i>	Balech 1947, 1973; Alder & Boltovskoy 1991	Kim et al. 2013, this report	
<i>Codonellopsis pussila</i>		this report	
<i>Cymatocylis affinis/convallaria</i>	Balech 1947, 1973; Sassi & Mello 1986; Barria de Cao 1987	Kim et al. 2013	Wickham et al. 2011
<i>Cymatocylis parva</i>		this report	
<i>Epiplocycloides reticulata</i>		this report	
<i>Helicostomella subulata</i>			Wickham et al. 2011
<i>Laackmanniella naviculaefera</i>	Balech 1973, Sassi & Mello 1986; Barria de Cao 1987; Alder & Boltovskoy 1991	this report	
<i>Laackmanniella prolongata</i>	Balech 1947; Alder & Boltovskoy 1991	Kim et al. 2013, this report	
<i>Salpingella curta</i>		this report	
<i>Salpingella decurtata</i>		this report	
<i>Salpingella faurei</i>		this report	
<i>Salpingella laackmaniella</i>		this report	

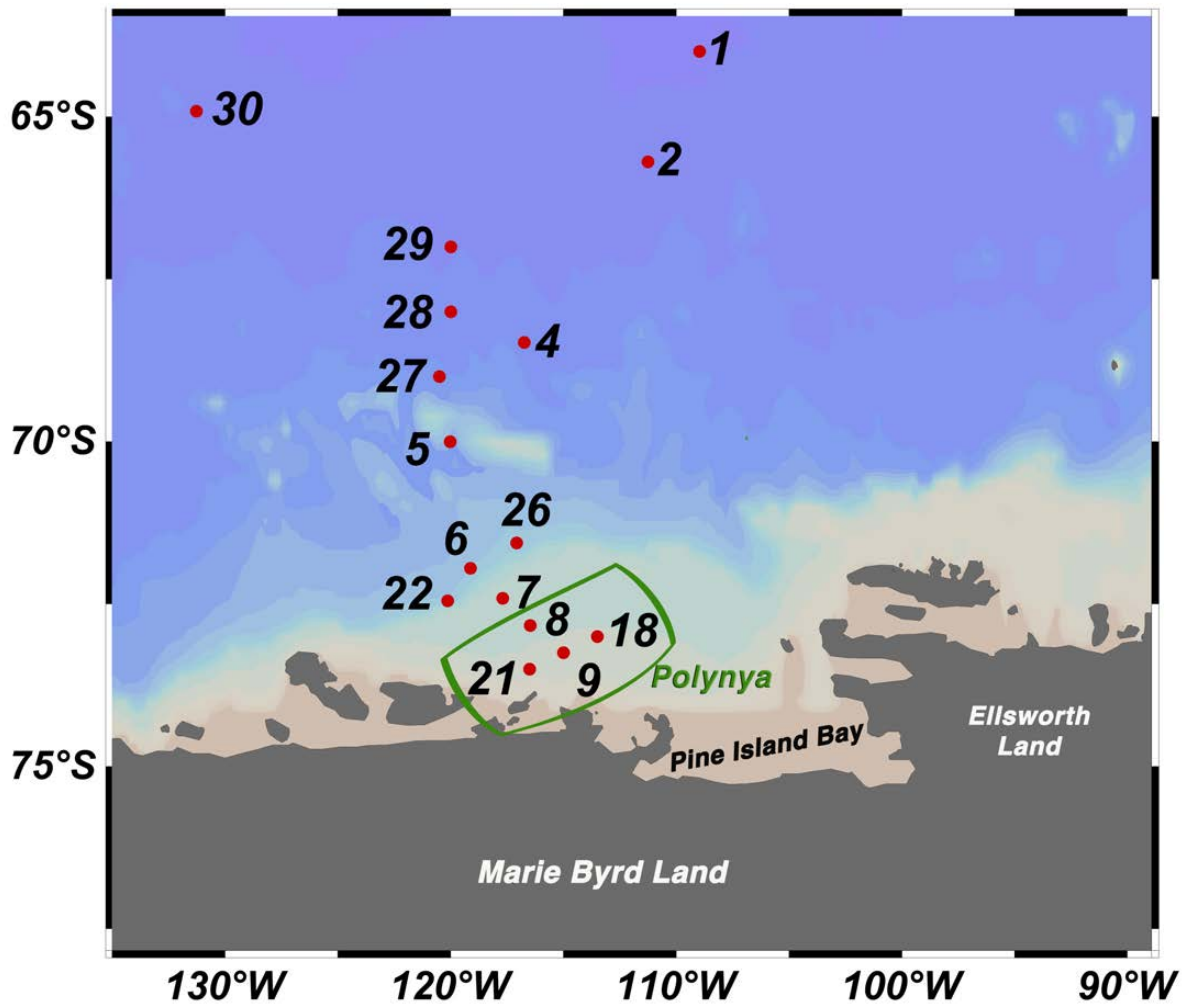


Figure One. Location of stations sampled for tintinnids. The green box distinguishes the polynya stations, following Lee et al. 2012.

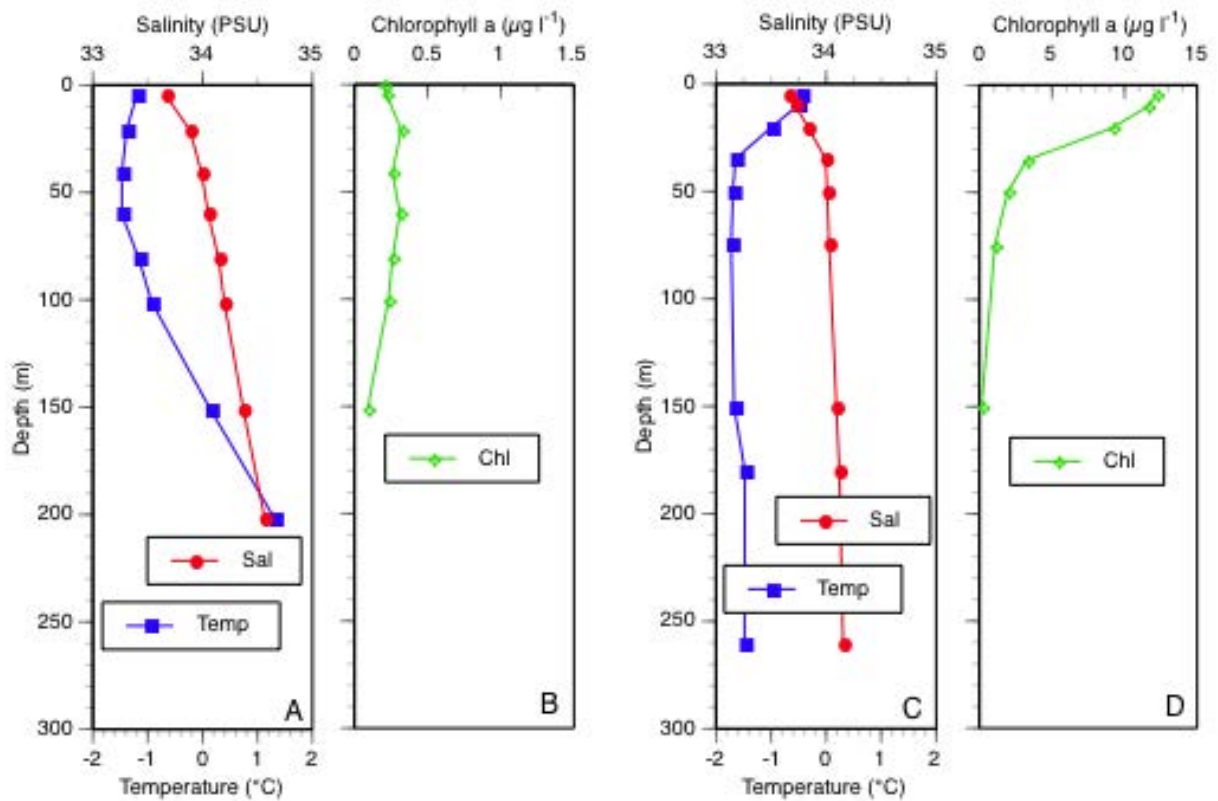


Figure Two. Water column profiles of Station 5 (A & B), typical of deep off-shore stations, and a polynya station, Station 18 (C & D). Note the difference in scales of the chlorophyll profiles. For further details see Tables 1 & 2.

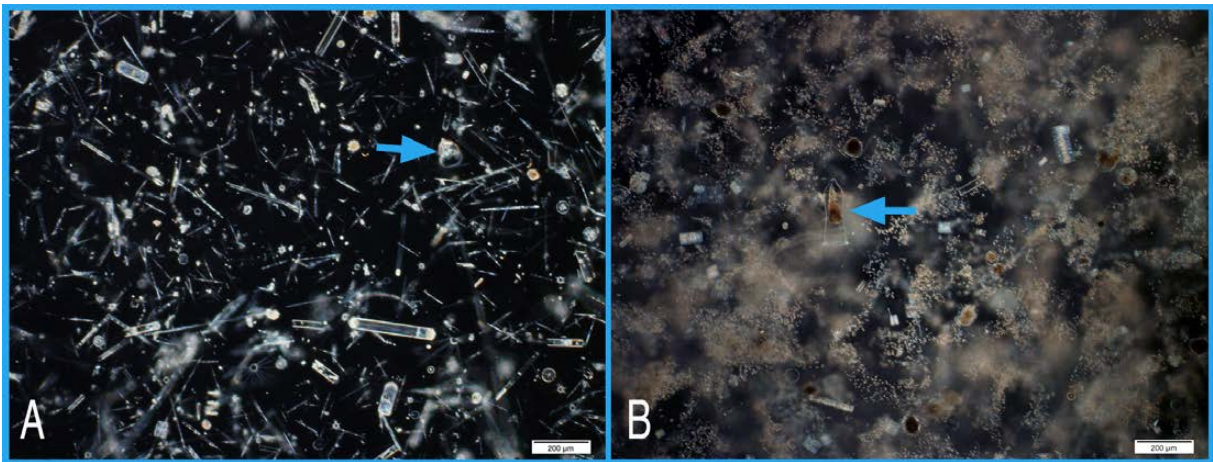


Figure Three. Low magnification (4x objective) views of settled net tow material from an offshore deep water station 5 (A) showing a dominance by diatoms and a coastal polynya Station 18 (B) showing a dominance by colonies of *Phaeocystis*. The area shown is equivalent to a volume of the original net tow material from about 1L of seawater. The arrows show tintinnids (*Cymatocylis*).

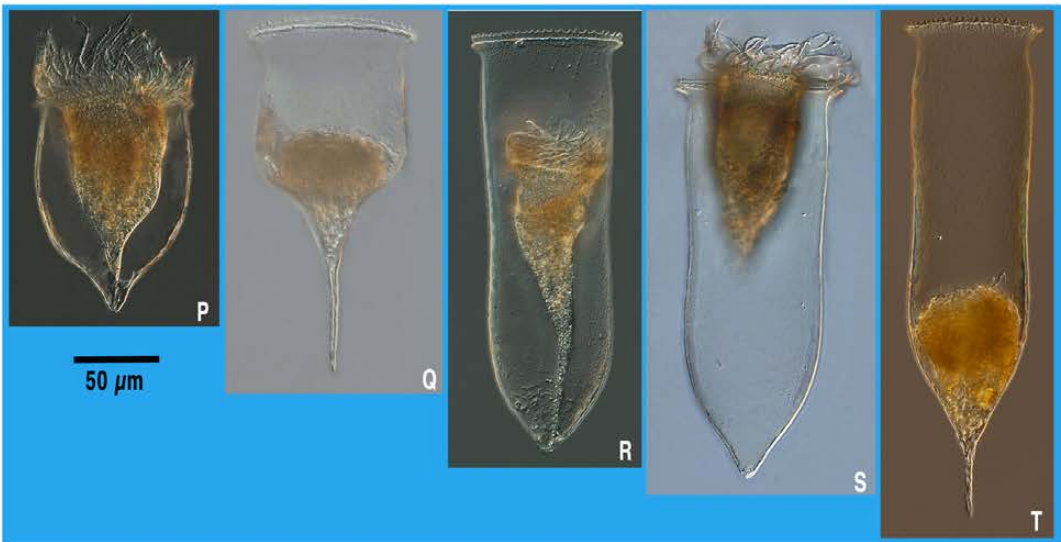
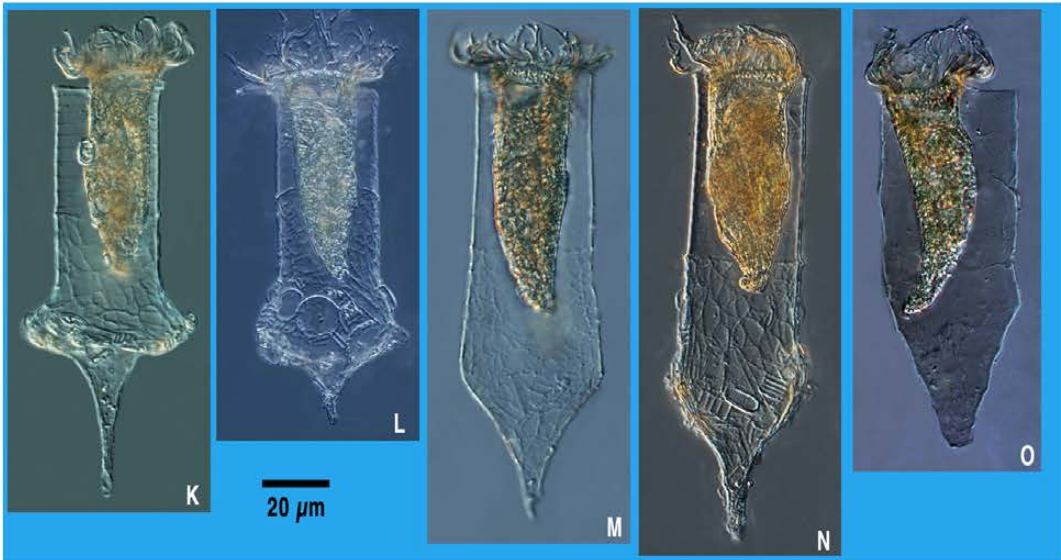
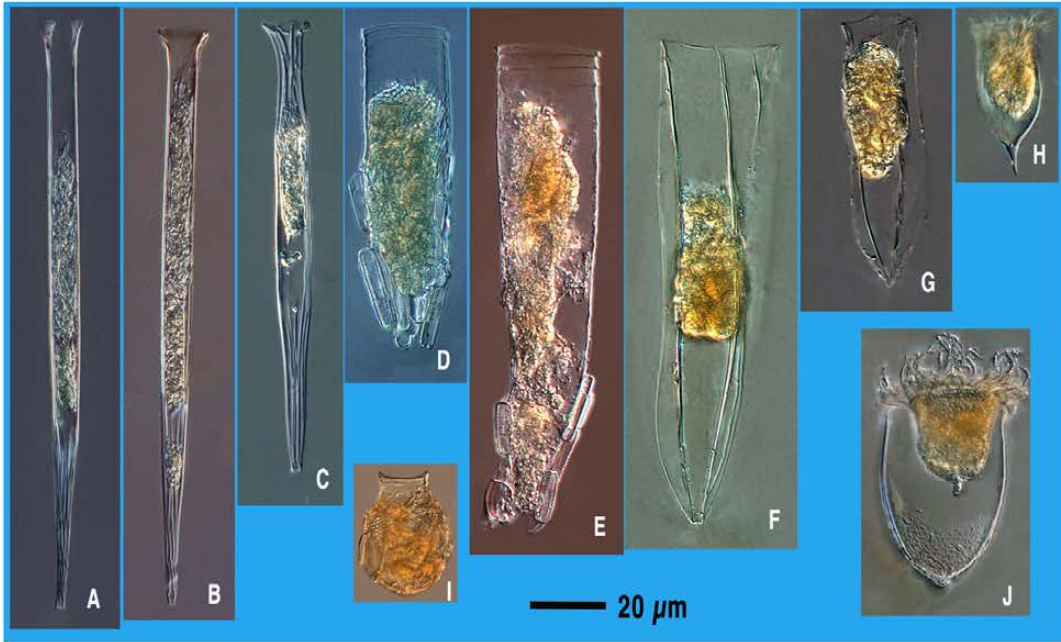


Figure Four. Tintinnid species encountered in the Amundsen Sea Samples. A. *Salpingella laackmanni*, B. *Salpingella decurtata*, C. *Salpingella faurei*, D. *Laackmanniella naviculaefera*, E. *Laackmanniella prolongata*, F. *Amphorellopsis quinquelata*, G. *Amphorides laackmanni*, H. *Acanthostomella obtusa*, I. *Codonellopsis pusilla*, J. *Epiplocycloides reticulata*; K. *Codonellopsis gaussi*, L. *Codonellopsis gaussi*, M. *Codonellopsis gaussi* forma *globosa*, N. *Codonellopsis gaussi* forma *cylindricoconica*, O. *Codonellopsis gaussi* forma *coxiella*, P. *Cymatocylis affinis/convallaria*, Q. *Cymatocylis affinis/convallaria* forma *calcyformis*, R. *Cymatocylis affinis/convallaria* forma *subrotundata*, S. *Cymatocylis affinis/convallaria* forma *drygalski*, T. *Cymatocylis affinis/convallaria* forma *cylindrica*.
Note that some species agglutinate diatoms; the diatoms are not necessarily the most abundant according to Wasik et al. (1996).

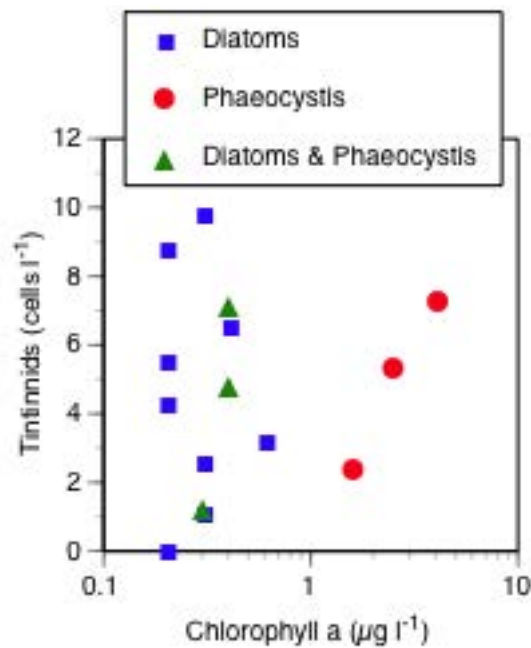


Figure Five. Scatterplot showing relationship between tintinnid and chlorophyll concentrations in the top 150 m. Symbols distinguish stations in which the microphytoplankton was dominated by diatoms, *Phaeocystis*, or was a mixture of both. There was no significant relationship between tintinnid and overall chlorophyll concentration nor among stations in which diatoms dominated the microplankton community. While we have quantitative data for only 3 of the 4 polynya stations, the concentration of tintinnids does however appear to increase with chlorophyll concentrations in the *Phaeocystis*-dominated communities ($n = 3$, $r = 0.987$).

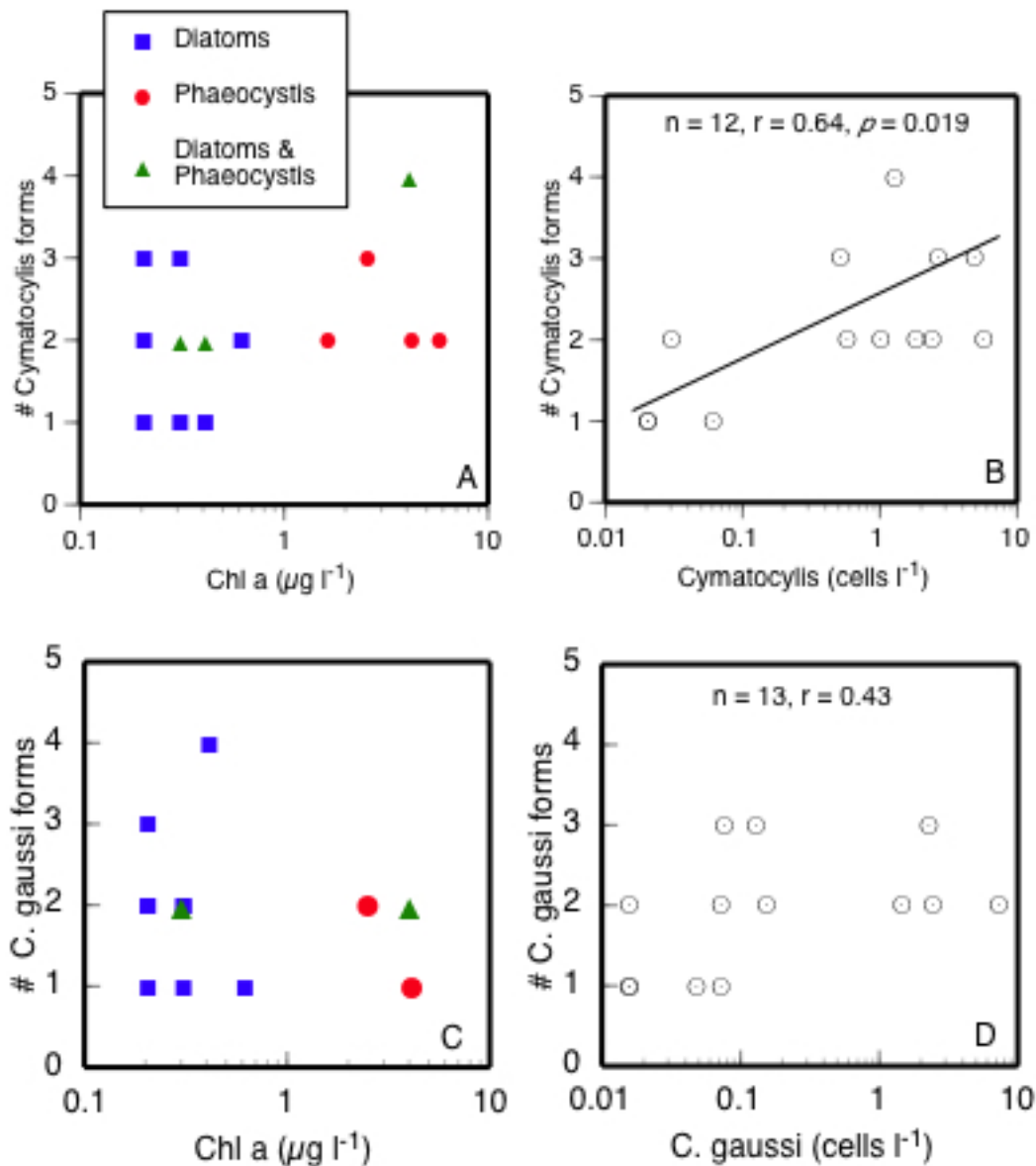


Figure Six. Scatterplots showing the relationship between the numbers of different forms of *Cymatocylis affinis* (A) and *Condonellopsis gaussi* (C) found in relation to the concentration of chlorophyll (symbols show the dominant phytoplankton forms), and the total concentrations of the species (B & D), all forms pooled. Note that there is no apparent relationship between numbers of forms and the concentration or composition of the phytoplankton. However, the number of forms found in a station sample was positively related to the overall concentration of *Cymatocylis affinis*, all forms pooled. For *C. gaussi* the relationship was not significant.