

# Unravelling the dynamics of pelagic ecosystems by quantitative observation of morphological attributes of marine snow: a case study in the Arctic.

Emilia Trudnowska<sup>1</sup>

Léo Lacour<sup>2</sup>, Mathieu Ardyna<sup>2</sup>, Andreas Rogge<sup>3,4</sup>

Jean Olivier Irisson<sup>5</sup>, Anya Waite<sup>6</sup>, Marcel Babin<sup>2</sup>, Lars Stemmann<sup>5</sup>

<sup>1</sup>Institute of Oceanology Polish Academy of Sciences, Sopot, Poland

<sup>2</sup>Takuvik Joint International Laboratory (CNRS and Université Laval), Québec, Qc, Canada

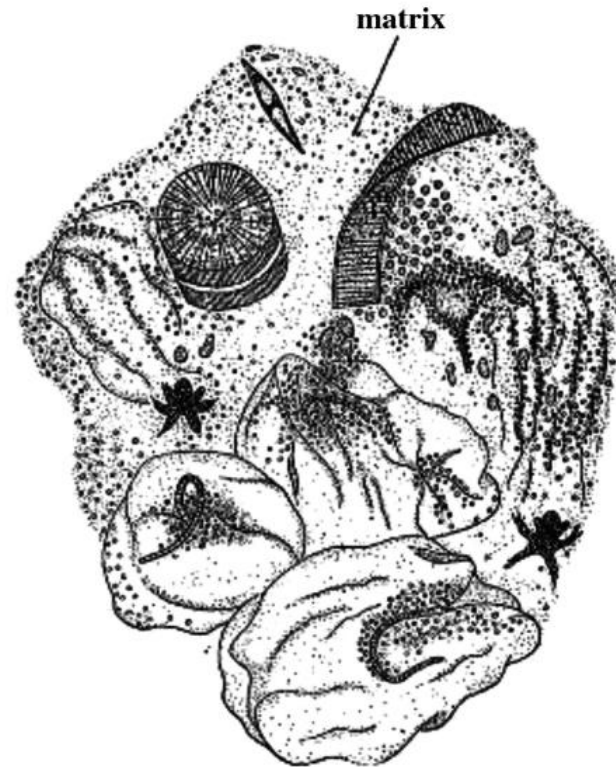
<sup>3</sup>Institute for Ecosystem Research, Kiel University, Kiel, Germany

<sup>4</sup>Alfred Wegener Institute, Helmholtz Center for Polar and Marine Research, Bremerhaven, Germany

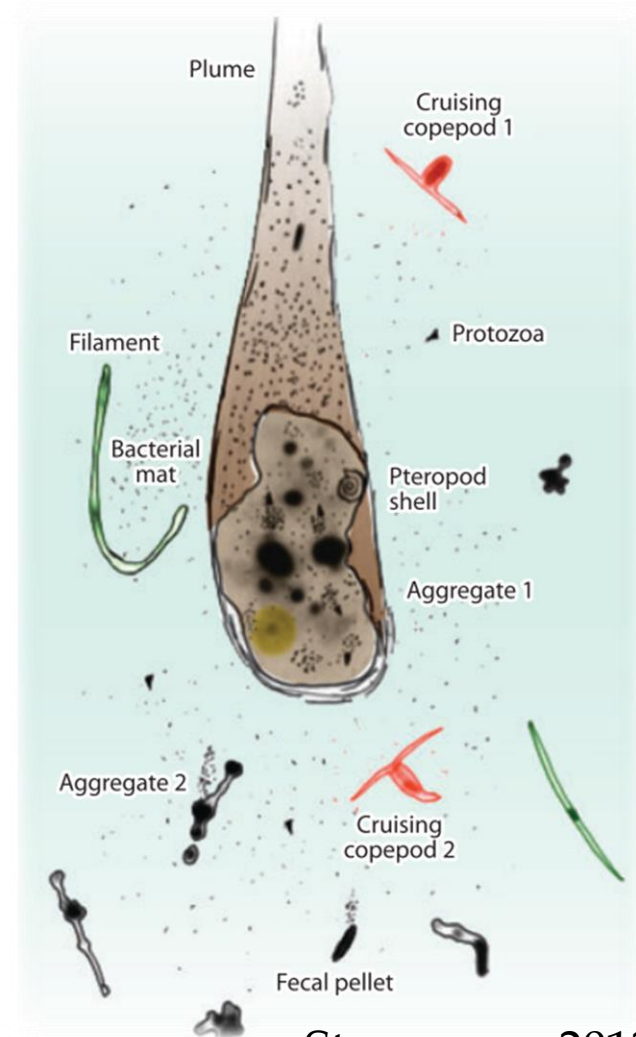
<sup>5</sup>Sorbonne Université, CNRS, UMR 7093, Laboratoire d'Océanographie de Villefranche-sur-Mer (LOV), Villefranche-sur-Mer, France

<sup>6</sup>Dalhousie University Halifax, Nova Scotia, Canada

# marine snow

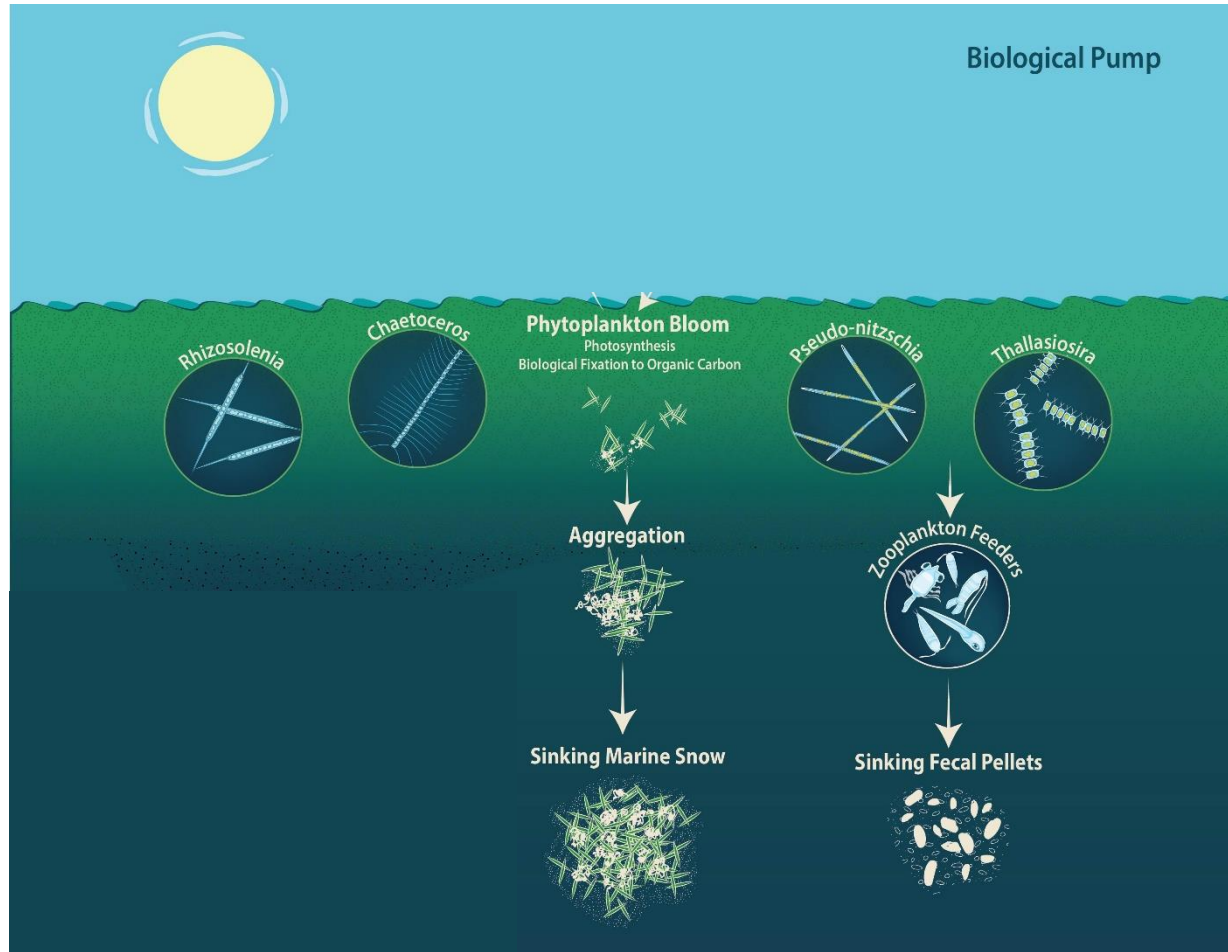


**Fig. 2.** Drawing of near-surface marine snow (“nuta”) and its contents, from waters adjacent to the most southerly of the islands of Japan. Image shows phytoplankton and other small organisms (possibly nauplii and Noctiluca) in the marine snow, collected and illustrated in Tsujita’s publication from 1953.

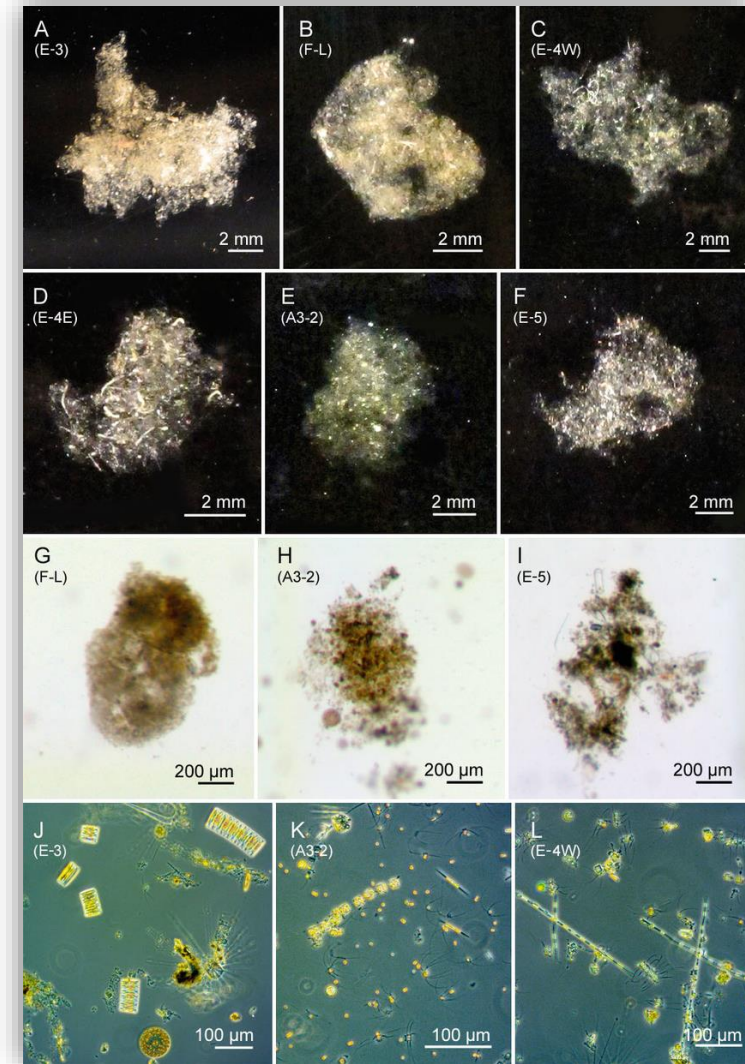


Stemmann, 2012

# morphological attributes of marine snow



@Natalie Renier



Laurenceau-Cornec et al. 2015

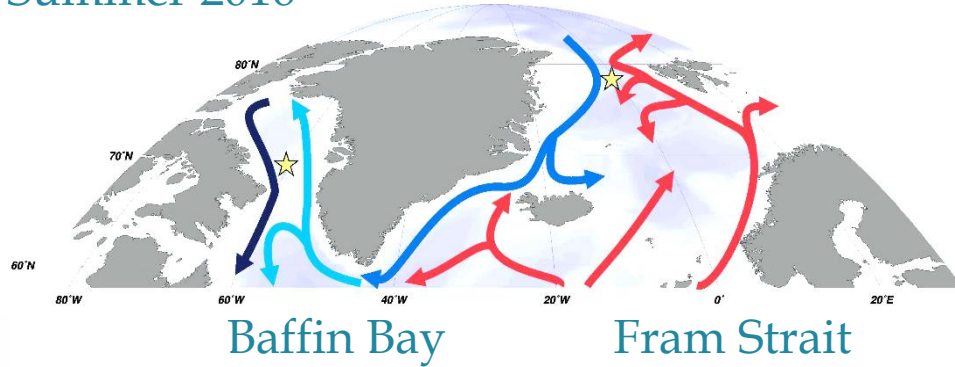




# Goals



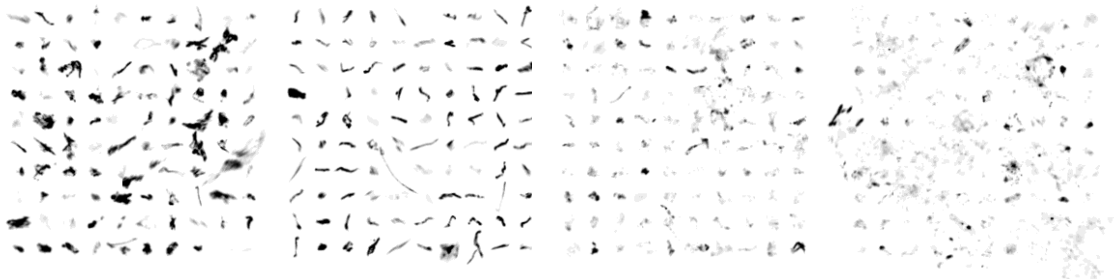
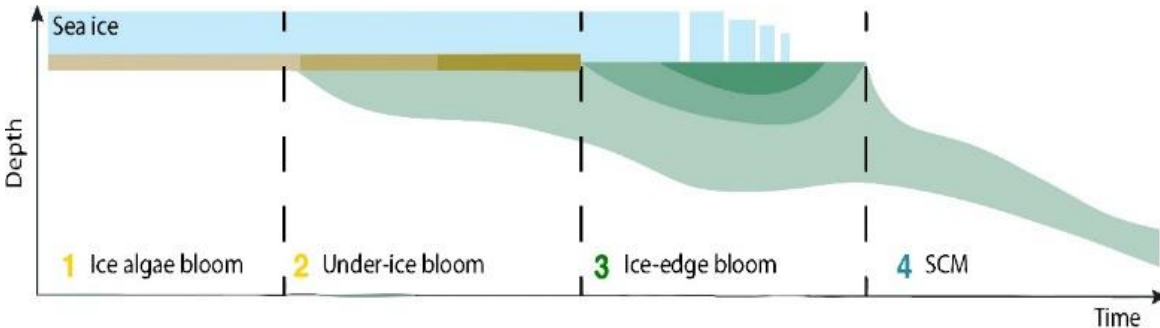
Summer 2016



to develop a simple approach to automatically classify marine snow images taken by Underwater Vision Profiler according to their morphology in two key Arctic locations

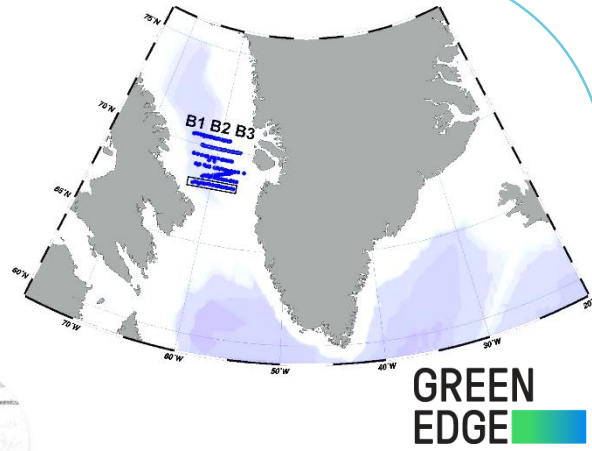
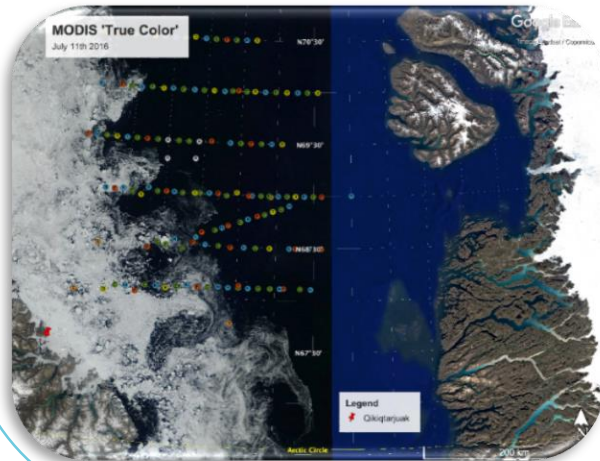
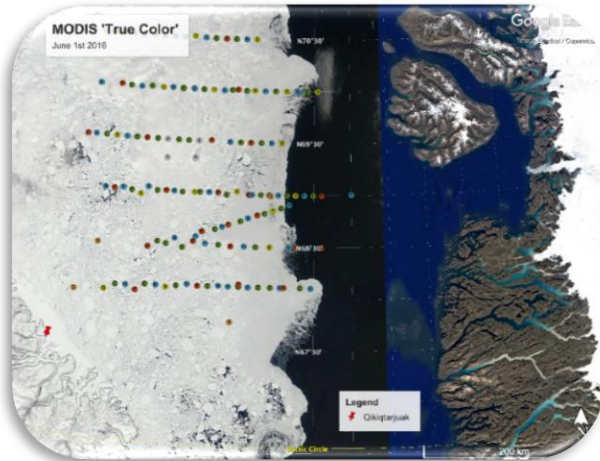
to follow the spatio-temporal modifications in morpho-traits of marine snow during specific productivity phases

to infer about vertical export of specific morpho-types of marine snow



# Baffin Bay

OWD : Open Water Days



164 stations

3 Periods:

B1:  $< -10$  OWD

B2:  $> -10 < +10$  OWD

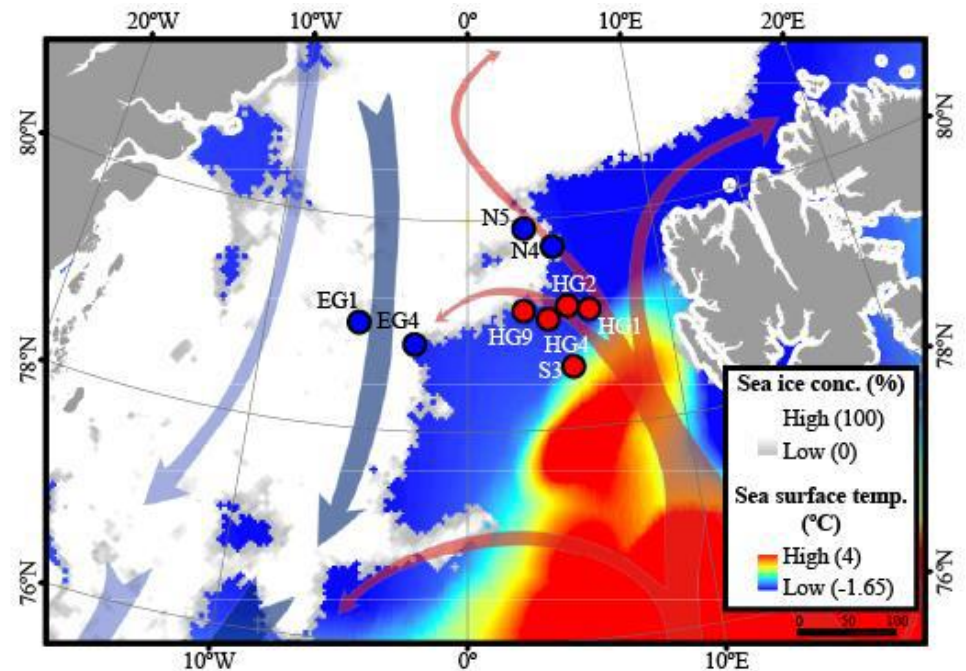
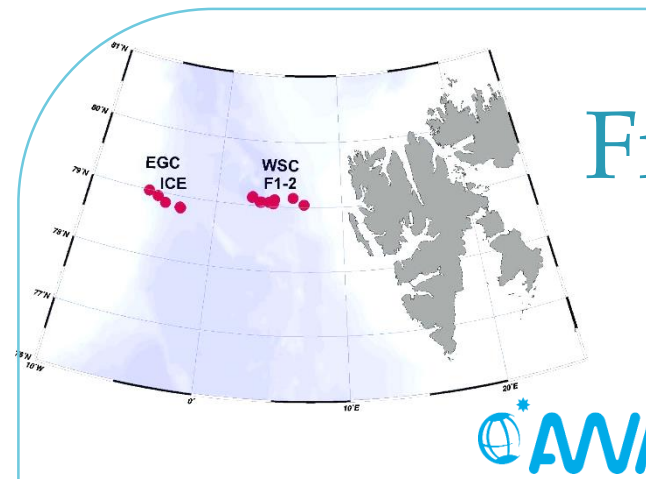
B3:  $> +10$  OWD

Randelhoff et al. 2019

# Fram Strait

26 stations

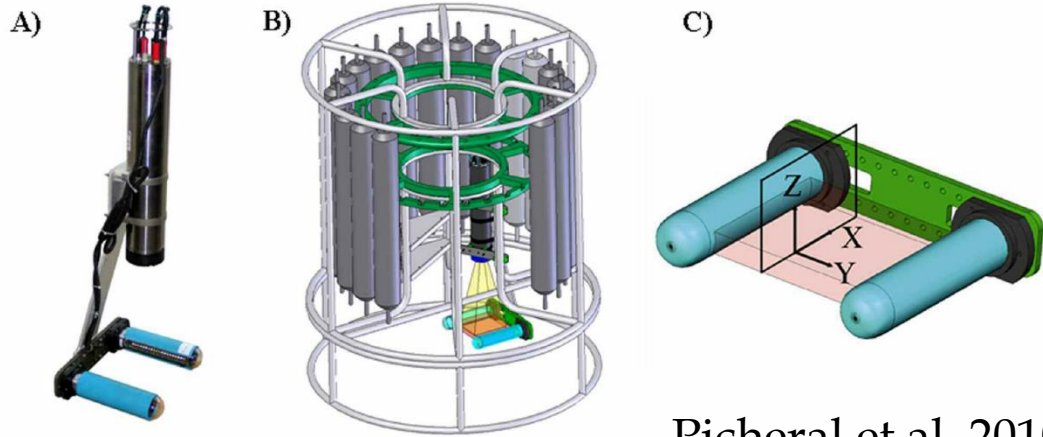
3 Periods:  
EGC - ICE  
WSC - F1  
WSC - F2



Fadeev et al. in prep.

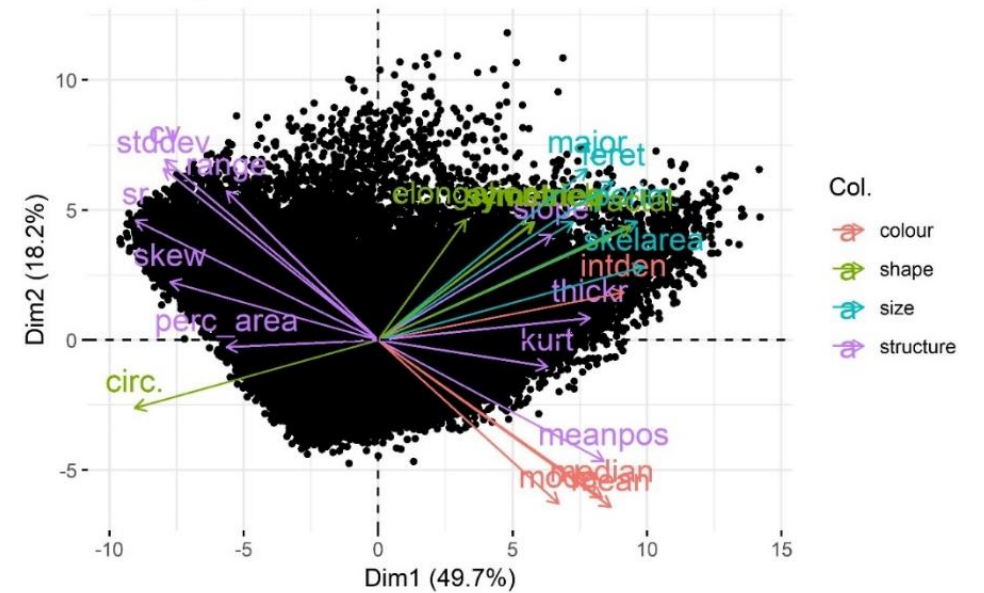
# In situ images

## UVP : Underwater Vision Profiler

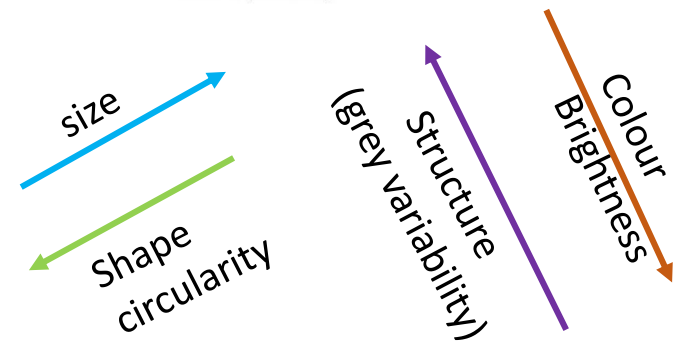
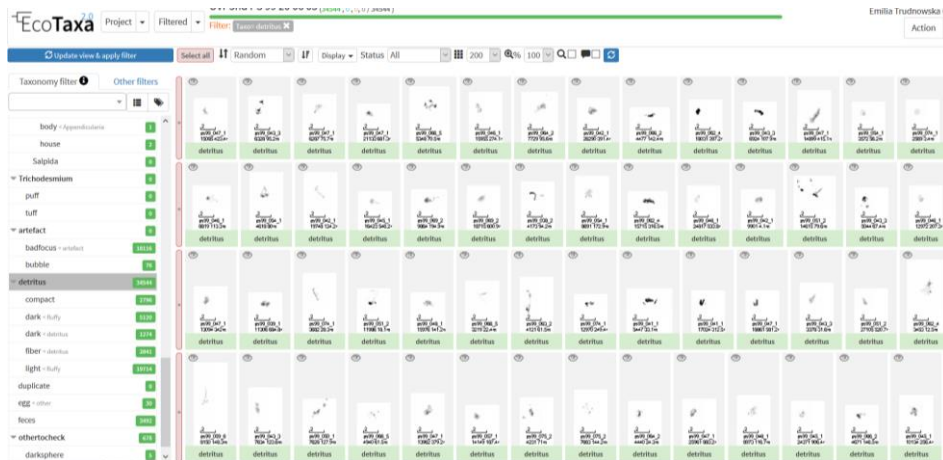


Picheral et al. 2010

## PCA : 24 morphological traits of every single marine snow particle

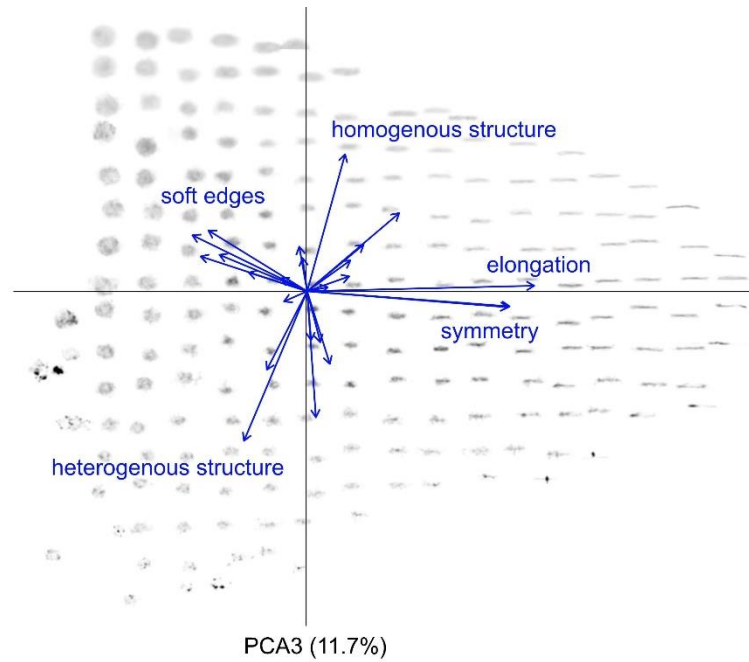
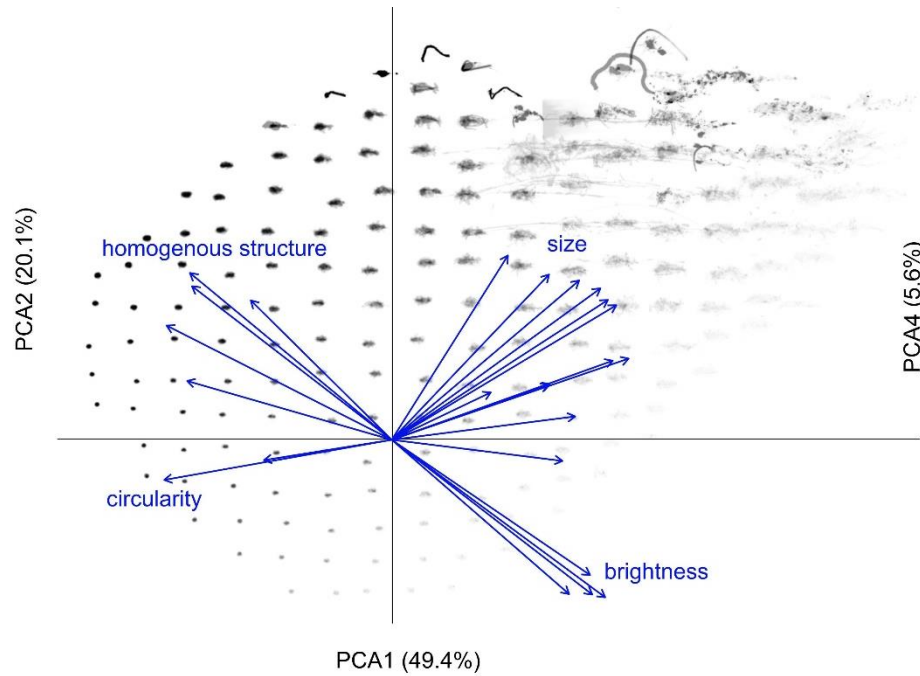


## ECOTAXA - 1 131 184 vignettes

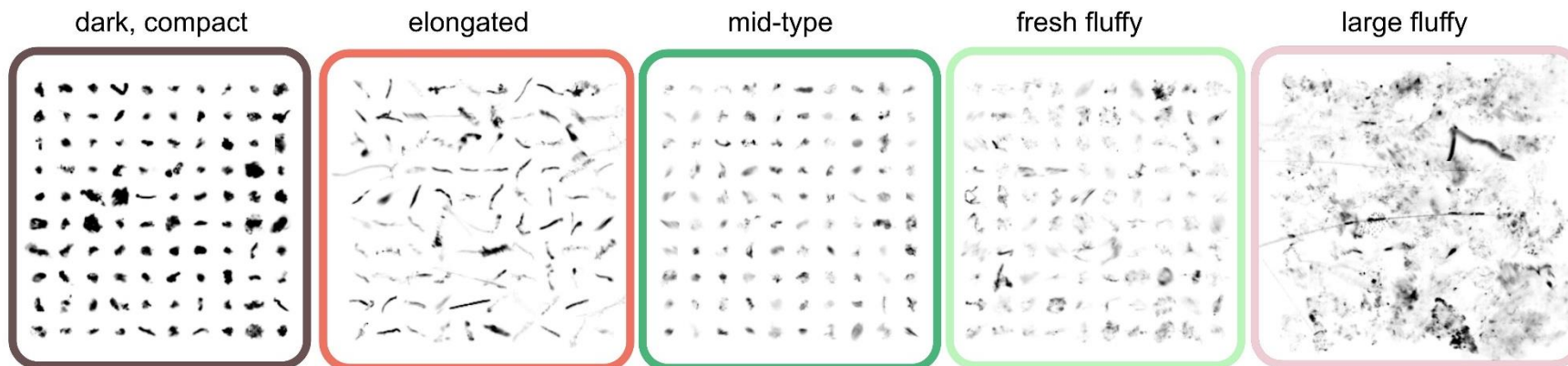
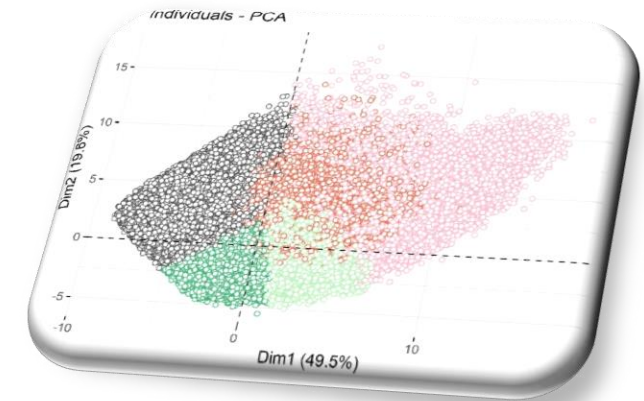




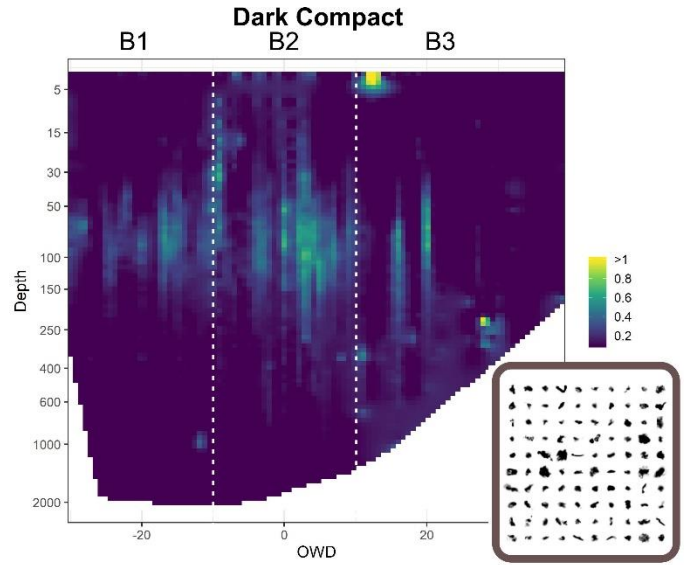
# Morpho-clusters of marine snow



## K-means clustering

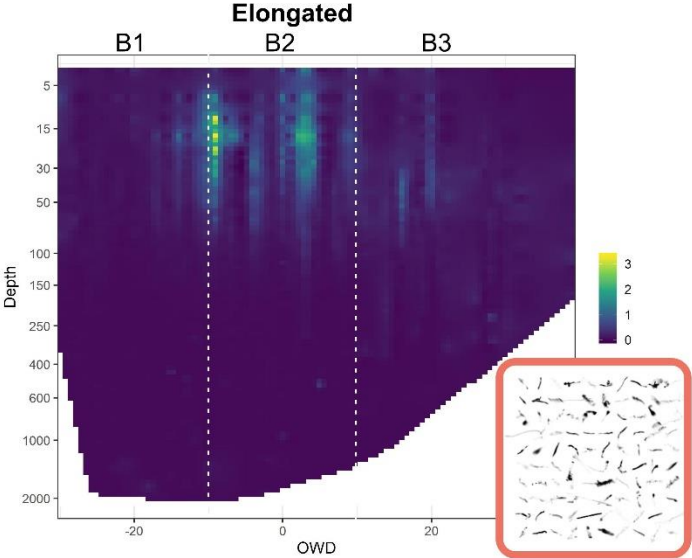
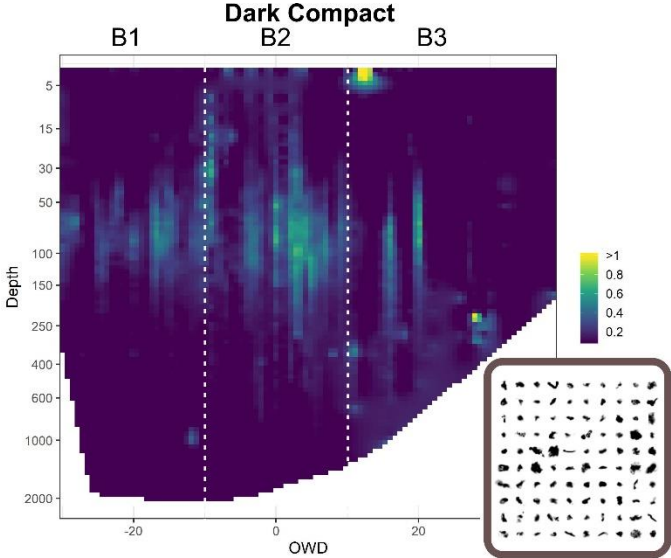


# Time series of marine snow morpho-clusters

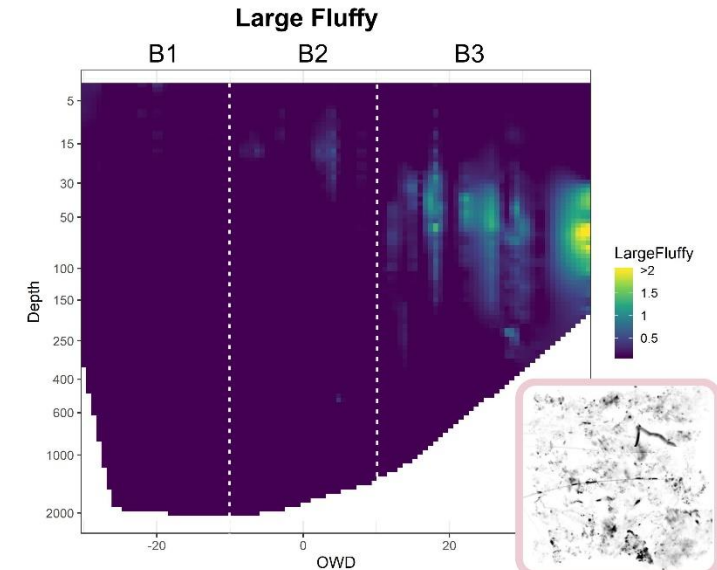
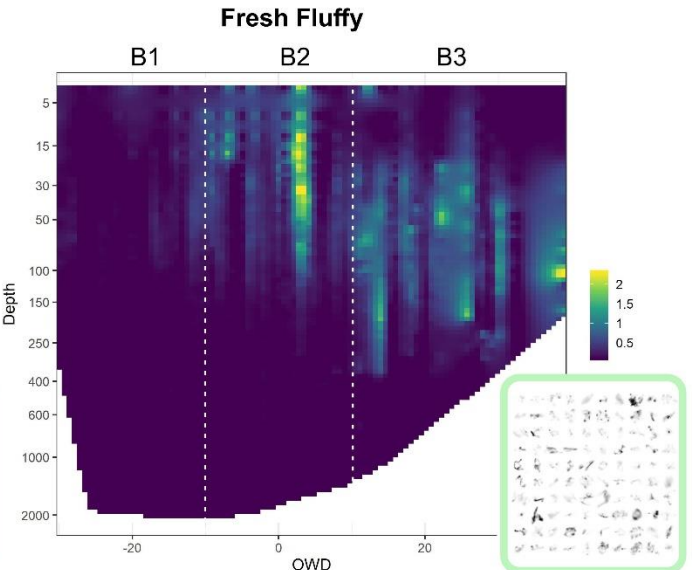
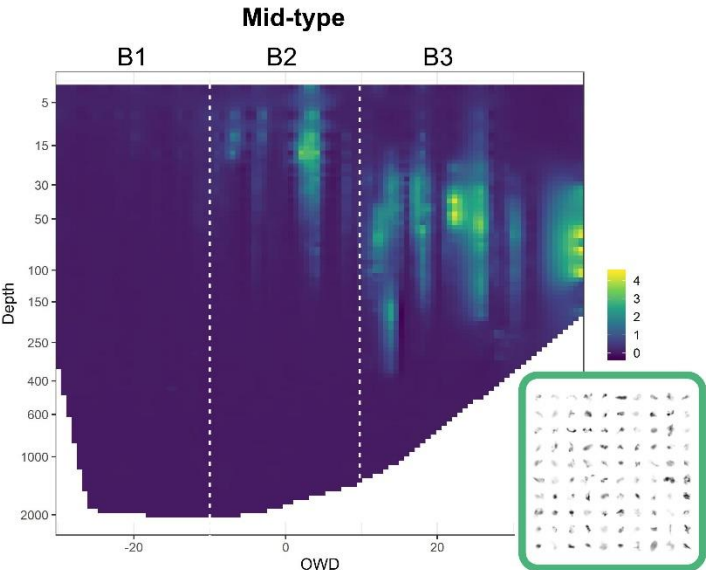
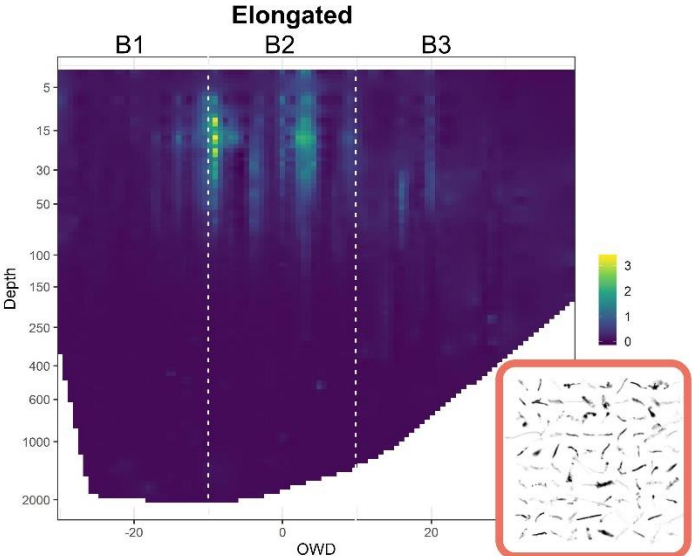
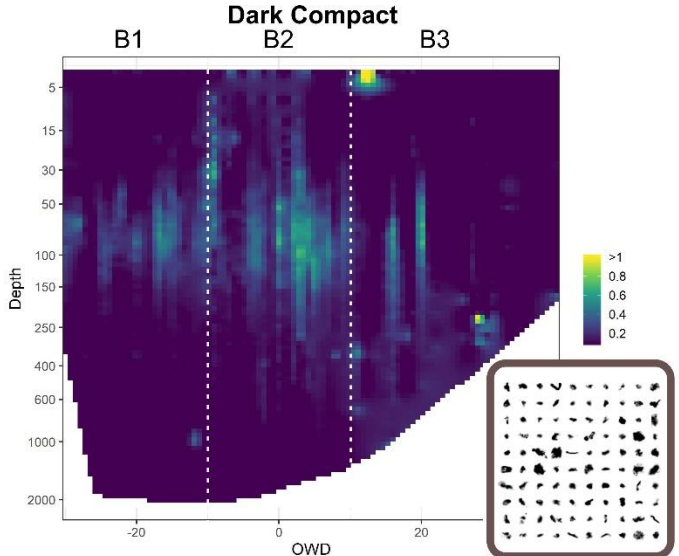




# Time series of marine snow morpho-clusters



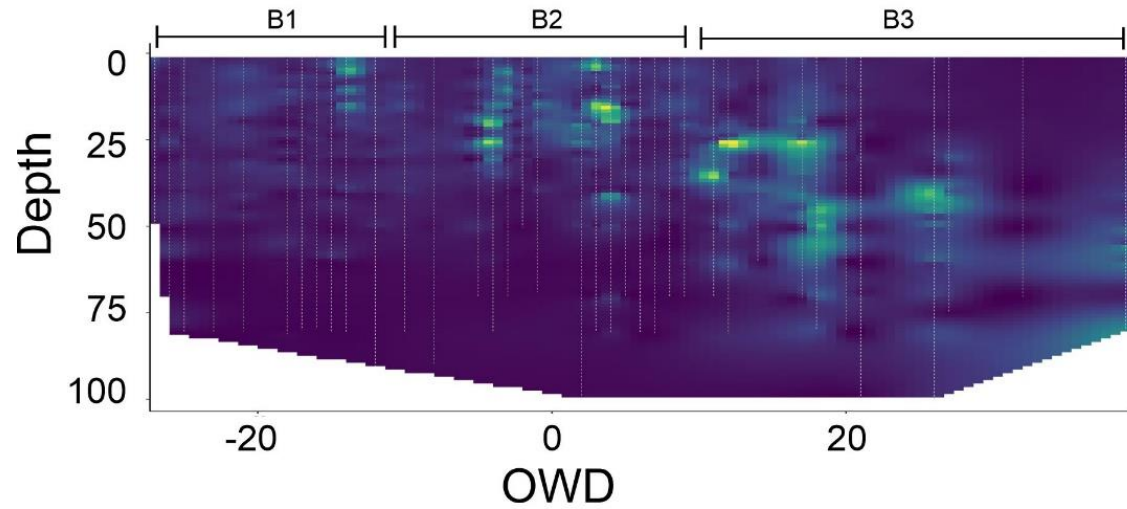
# Time series of marine snow morpho-clusters



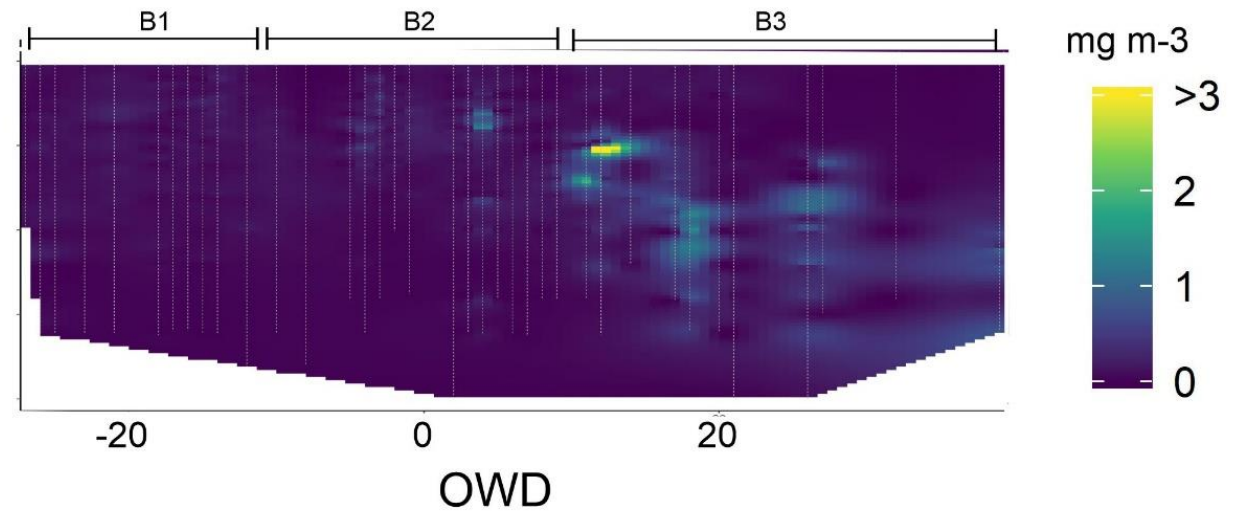
# Time series of phytoplankton



## Diatoms

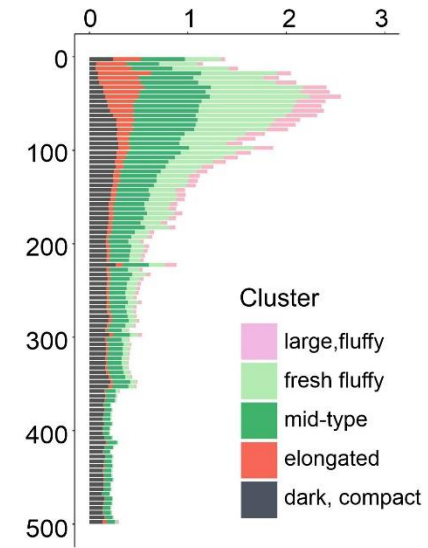
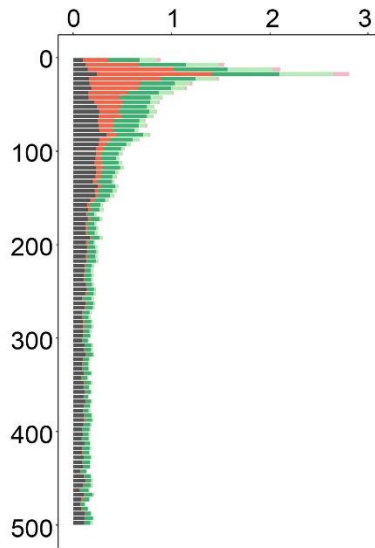
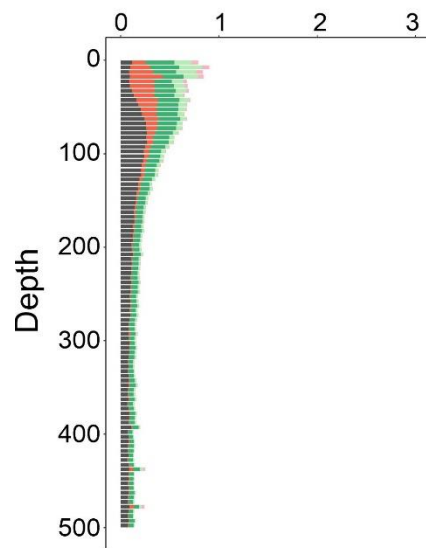
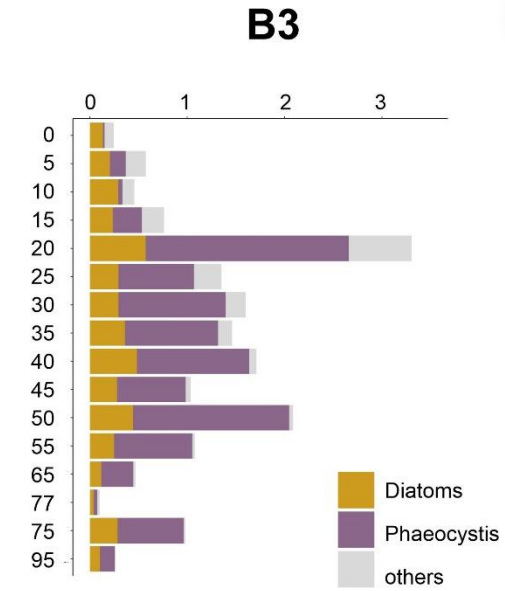
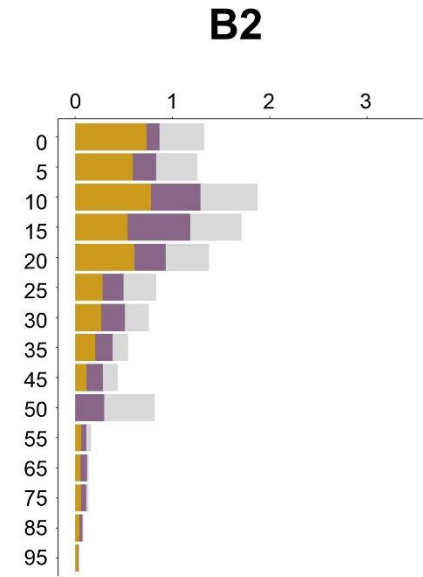
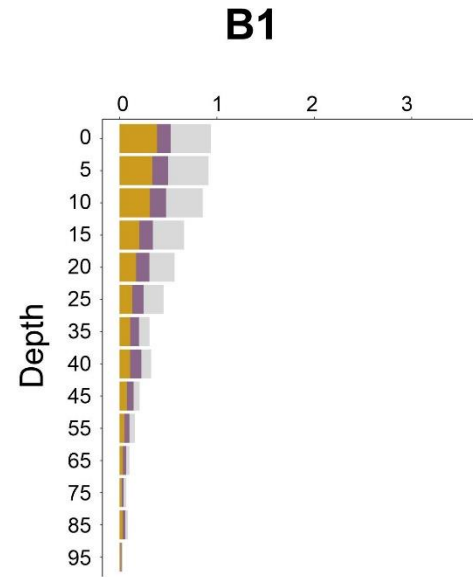
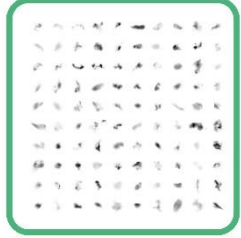
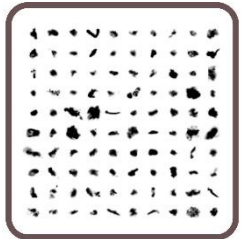


## Phaeocystis

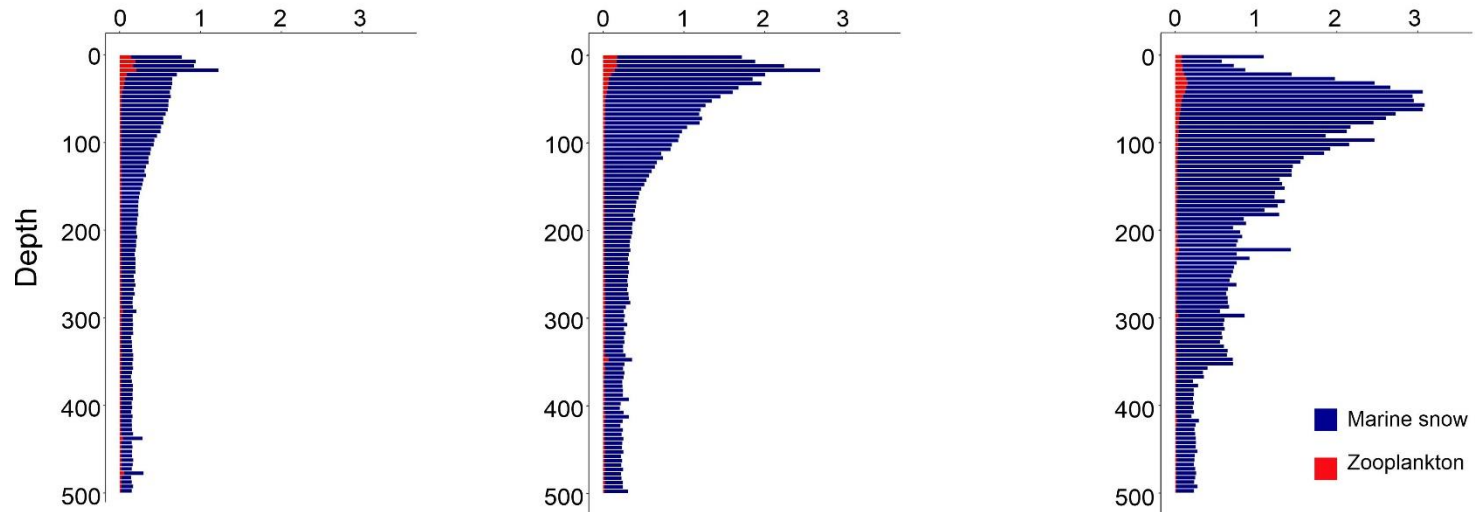
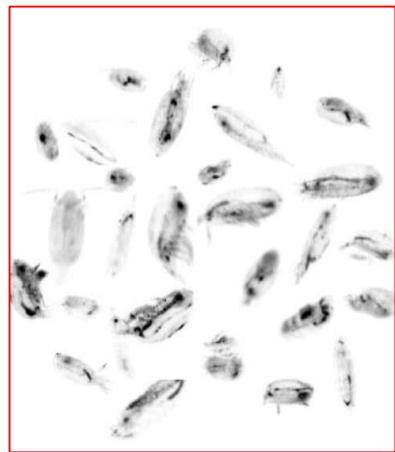
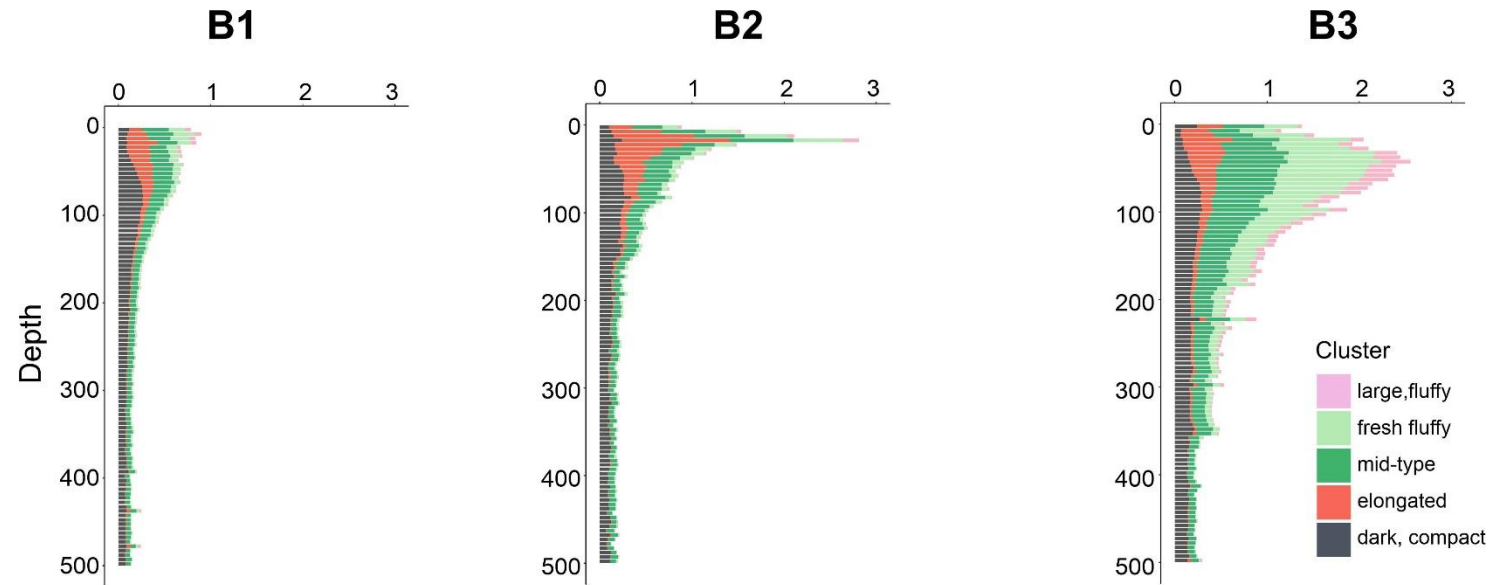




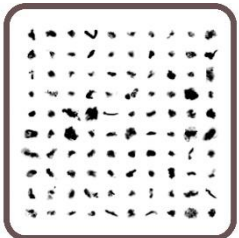
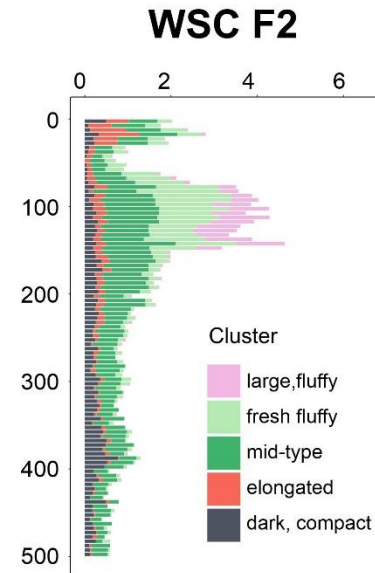
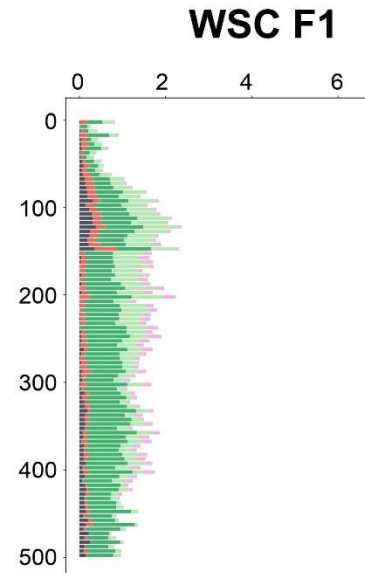
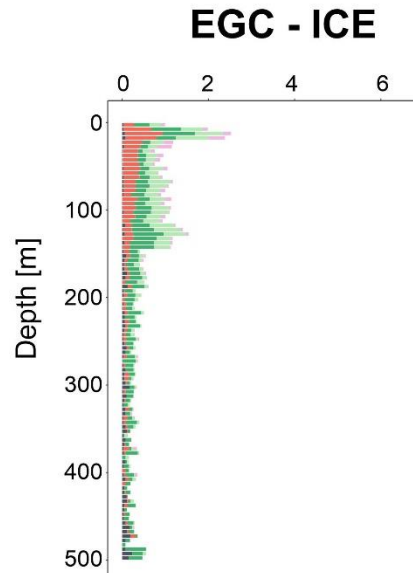
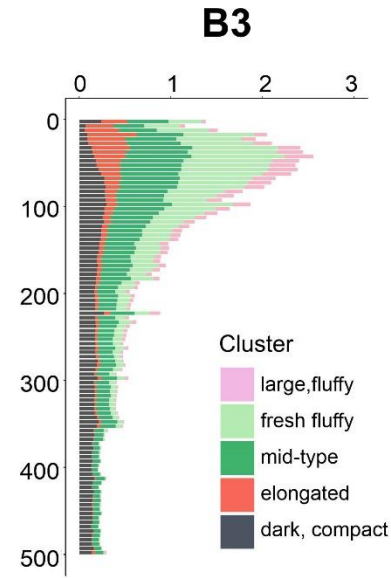
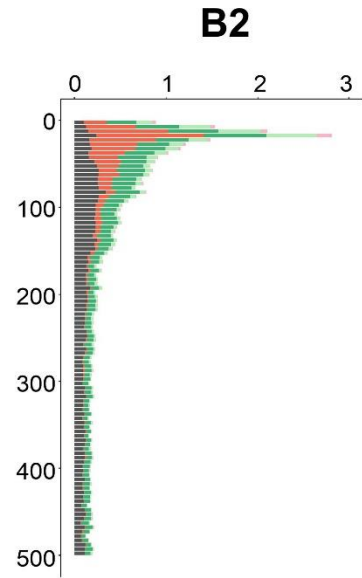
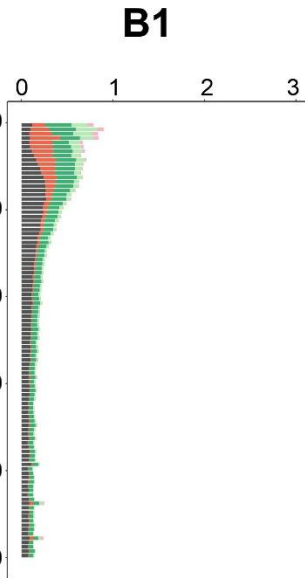
# Phytoplankton vs. marine snow composition



# Marine snow composition vs. zooplankton



# Baffin Bay vs. Fram Strait

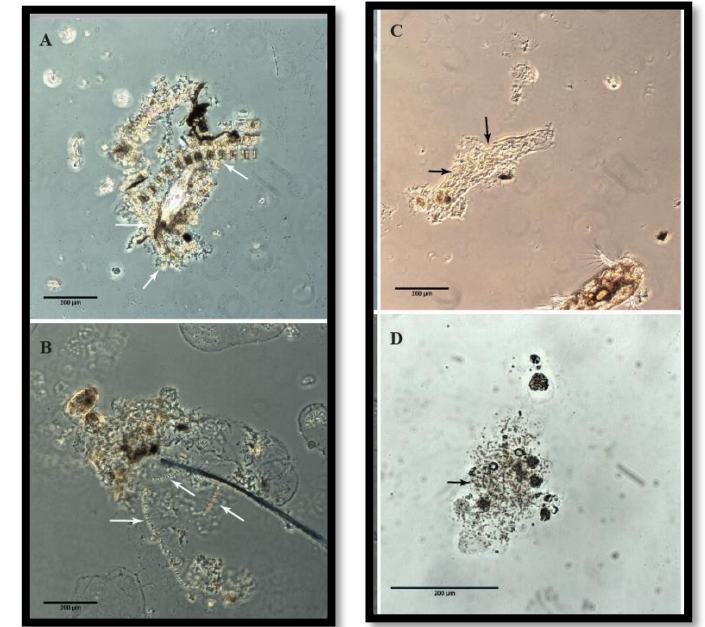
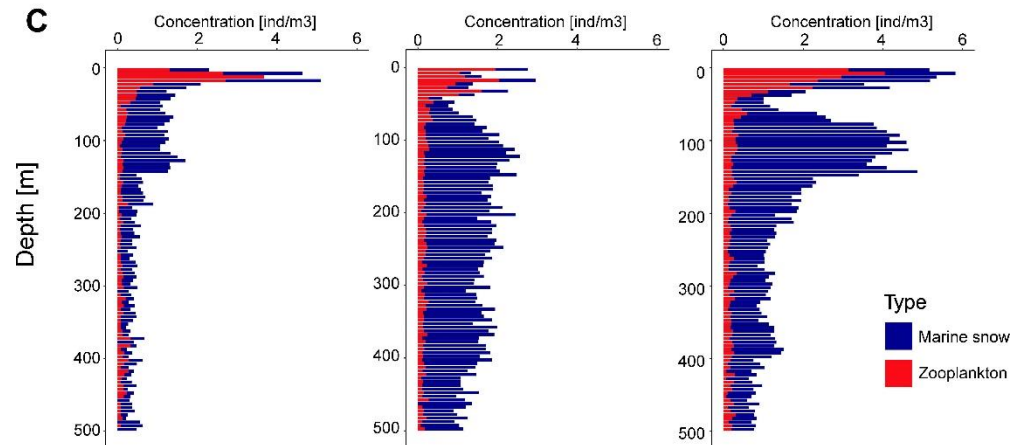
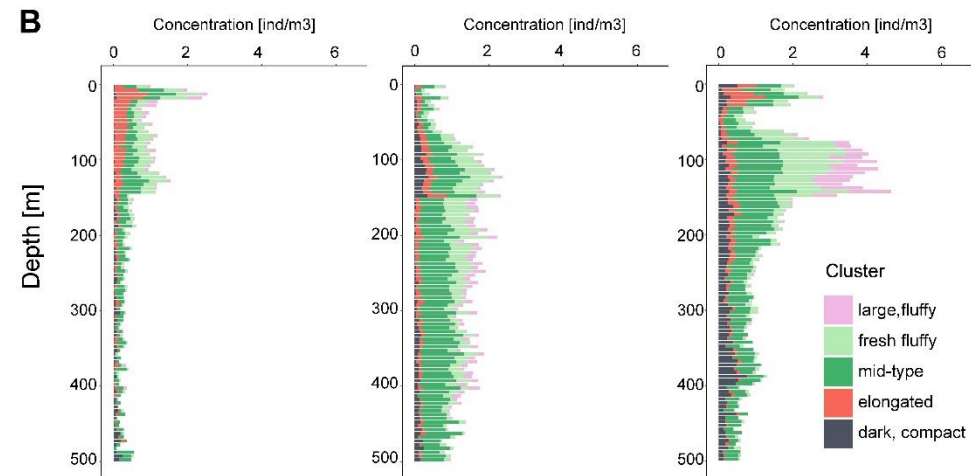
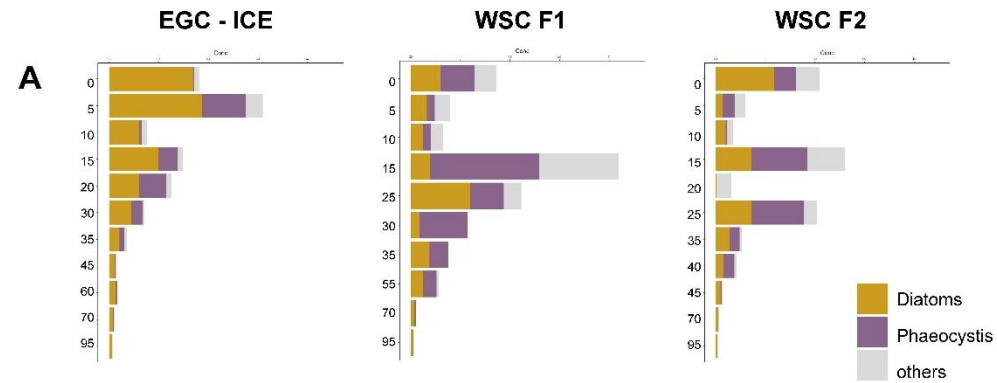




# Phytoplankton

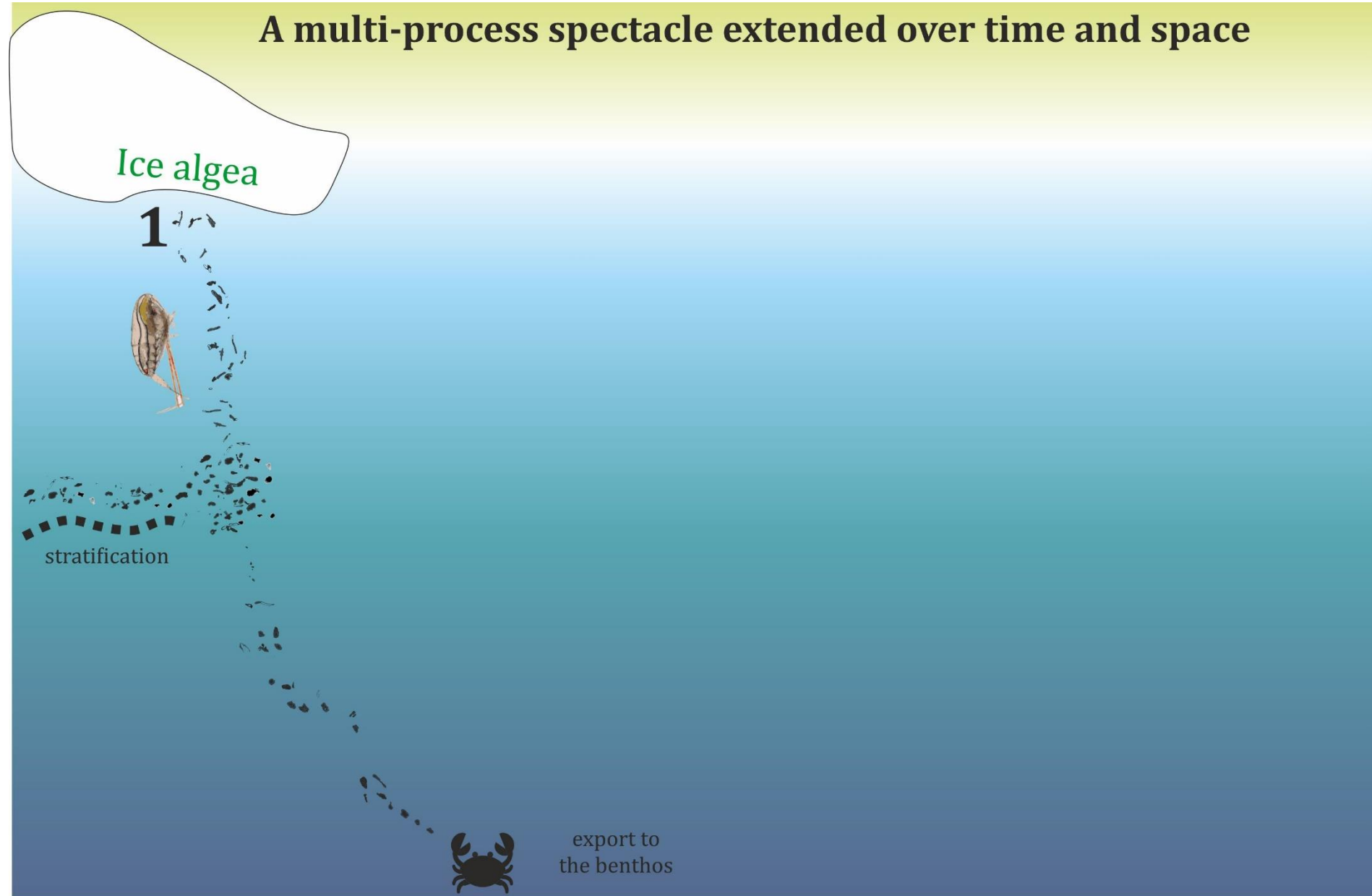
# Marine snow

# Zooplankton



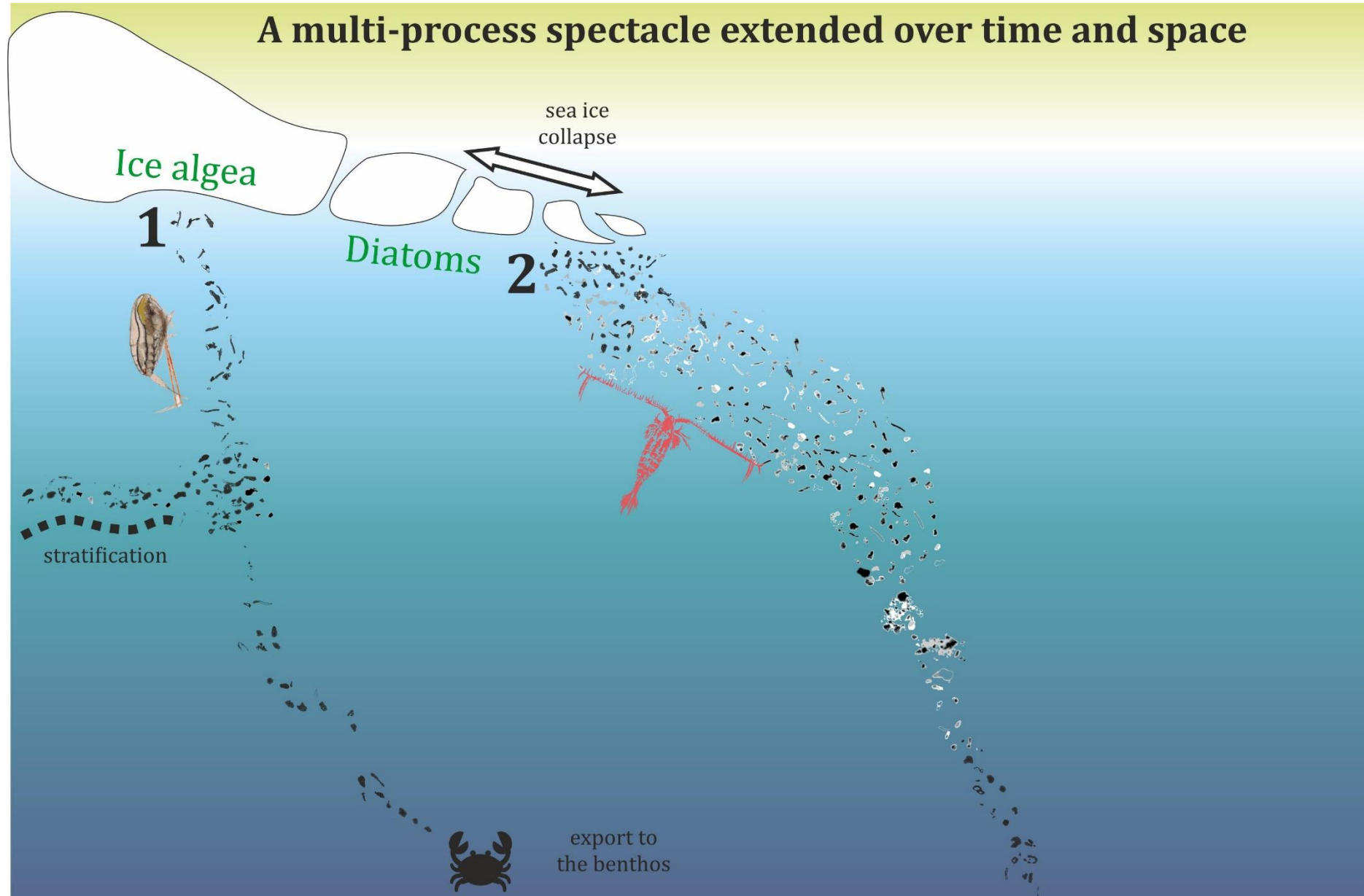
Fadeev et al. in prep.

# A multi-process spectacle extended over time and space



1. under ice bloom

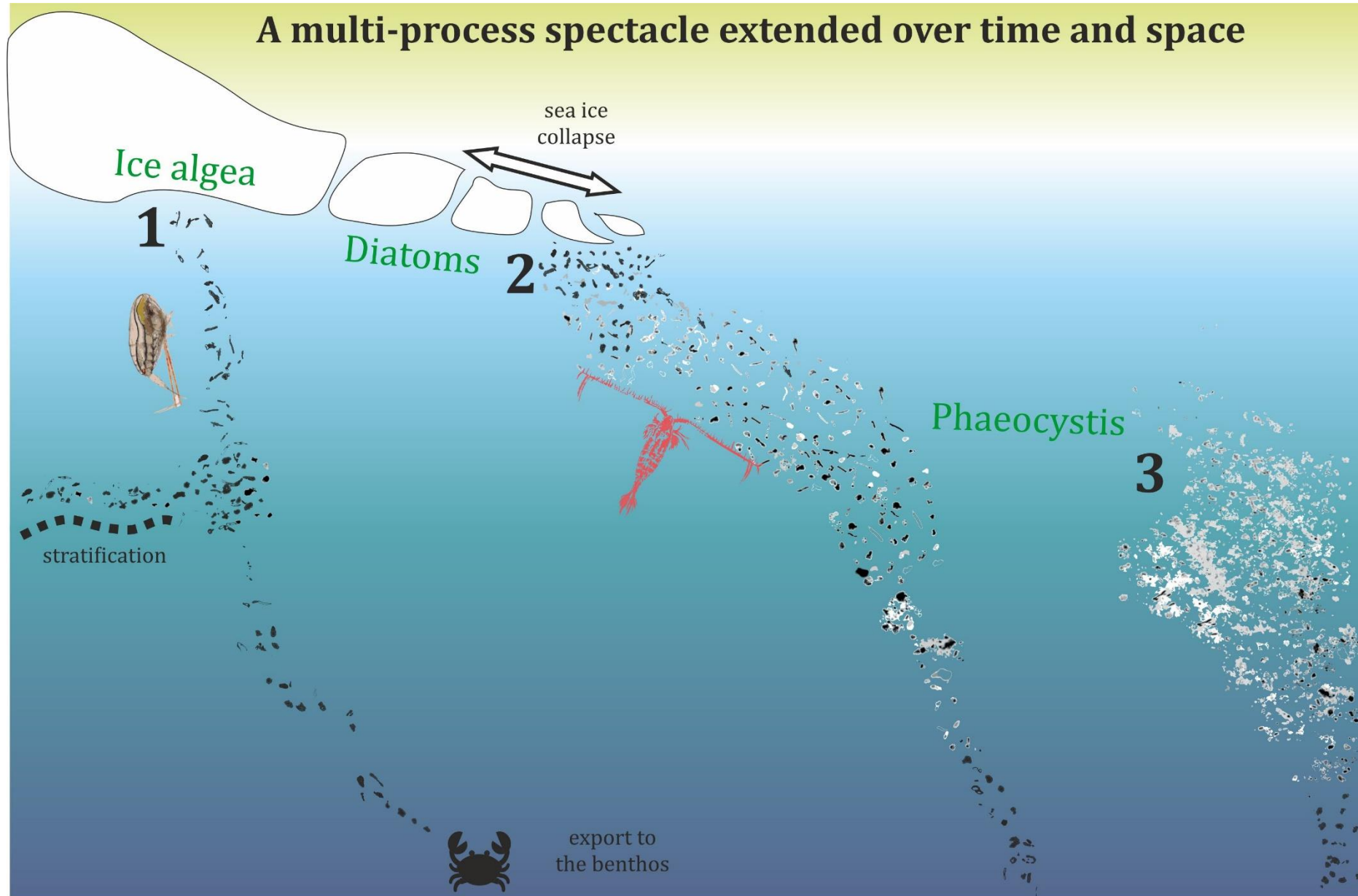
# A multi-process spectacle extended over time and space



1. under ice bloom      2. ice edge bloom



# A multi-process spectacle extended over time and space

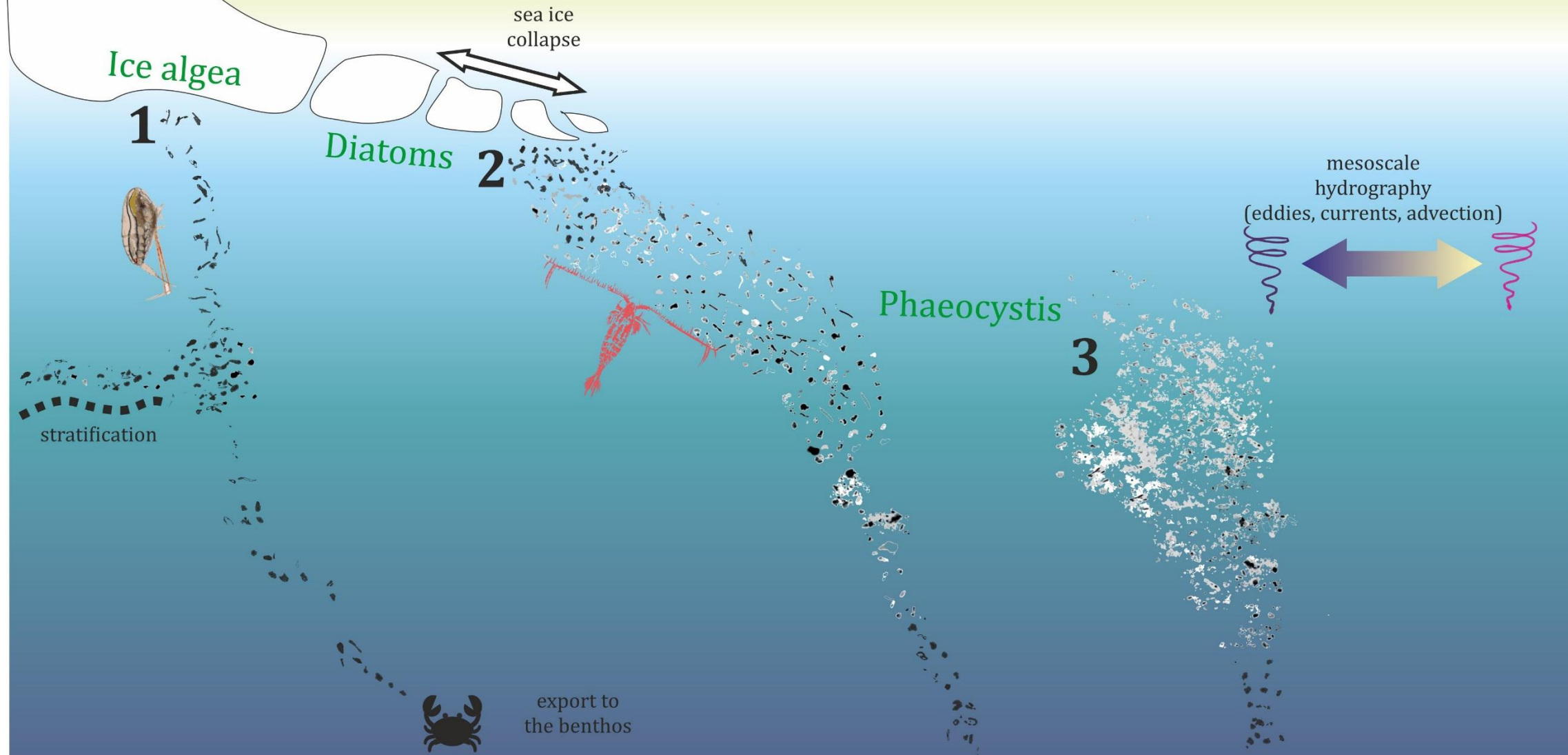


1. under ice bloom

2. ice edge bloom

3. advanced bloom

# A multi-process spectacle extended over time and space



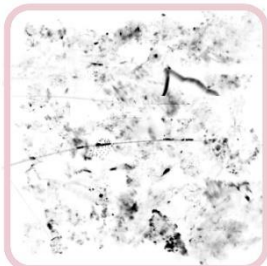
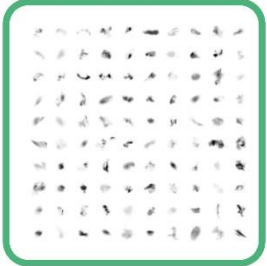
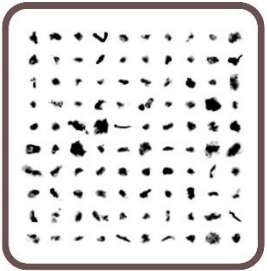
1. under ice bloom

2. ice edge bloom

3. advanced bloom

# Take home

- 'automatic' method by clustering - useful and reliable approach for following morphological changes in marine snow
- morphology of marine snow is clearly reflecting the successive bloom stages
- The occurrence of *Phaeocystis* is dramatically changing the structure/composition of marine snow. Those large, heterogeneous conglomerates are exported over 300 m
- Elongated forms (diatoms/feecal pellets) seem to be the least important component of the export
- The particles that reach the sea bottom are rather small, compact and dark.



**GREEN  
EDGE**



**TAKUVIK**

